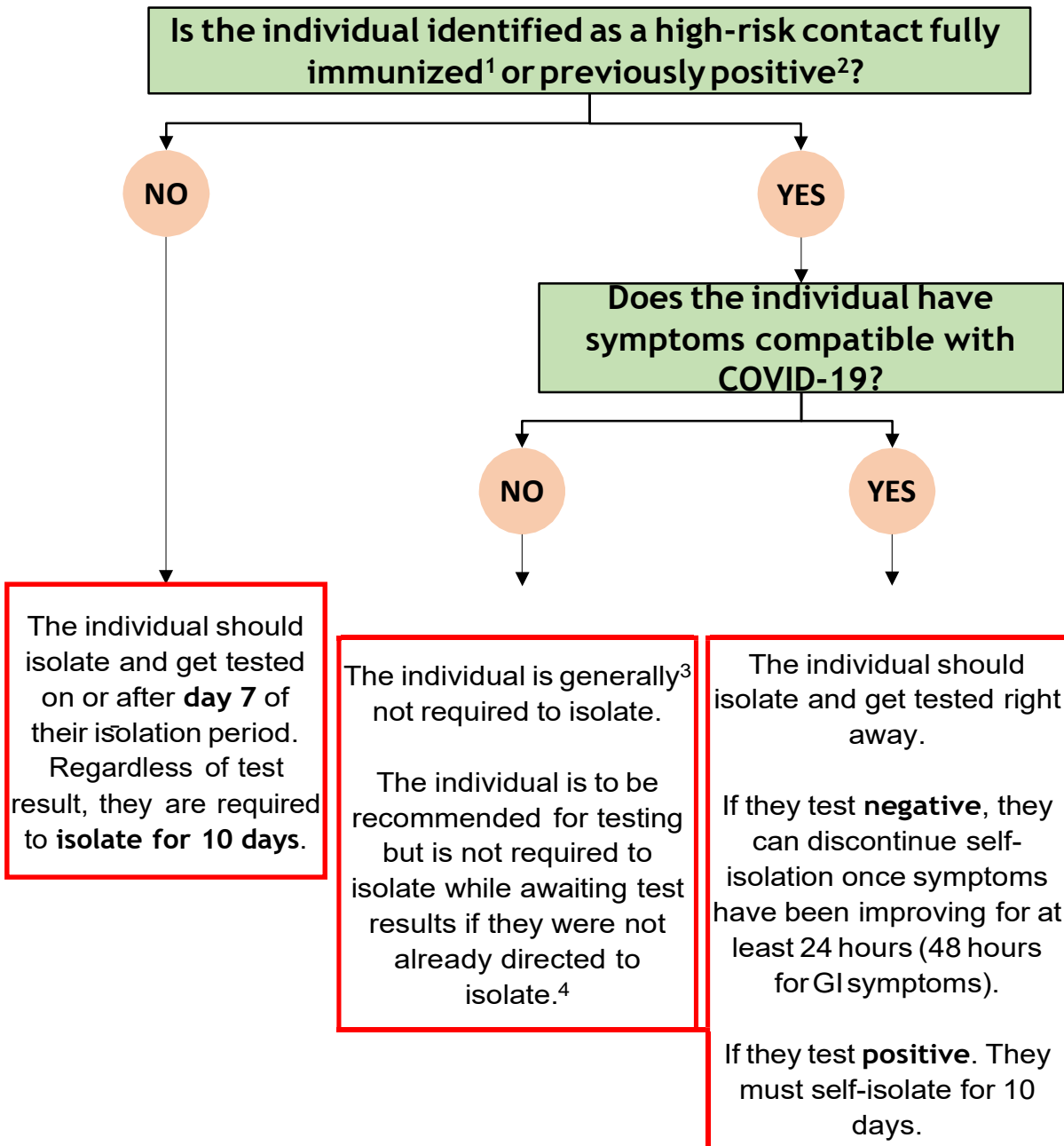


Case and Contact Management in Schools for High-Risk Contact



¹ For the purposes of case/contact/outbreak management, an individual is defined as fully immunized ≥ 14 days after receiving their second dose of a two-dose COVID-19 vaccine series or their first dose of a one-dose COVID-19 vaccine series that is [listed for emergency use](#) by the World Health Organization or approved by Health Canada.

Individuals who are immunocompromised are excluded from this definition, in accordance with [COVID-19 Fully Immunized and Previously Positive Individuals: Case, Contact and Outbreak Management Interim Guidance](#).

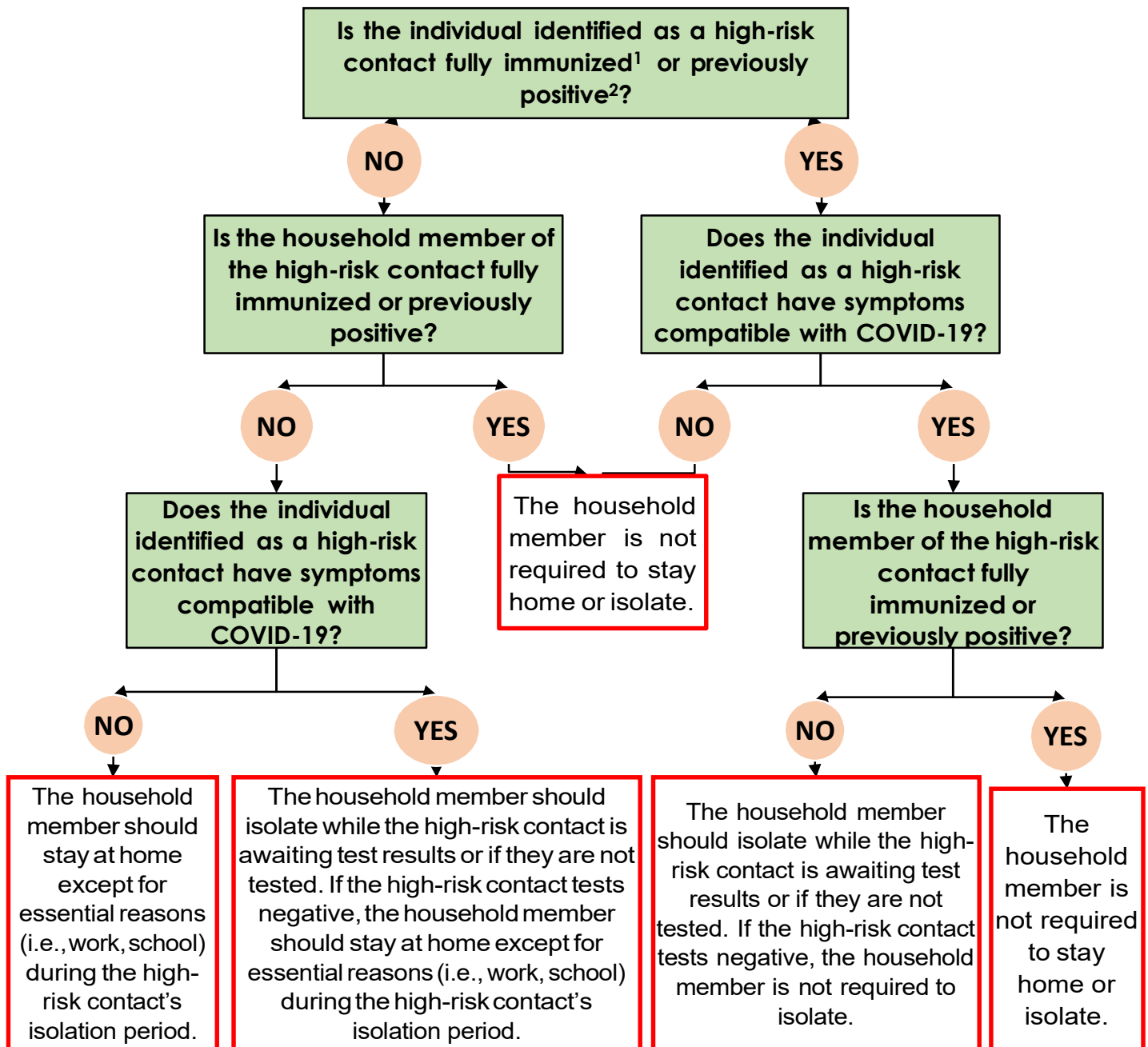
² For the purposes of case/contact/outbreak management, an individual is defined as previously positive if they were a confirmed case of COVID-19 where their initial positive result was ≤ 90 days ago AND they have been [cleared from their initial infection](#). Individuals who are immunocompromised are excluded from this definition, in accordance with [COVID-19 Fully Immunized and Previously Positive Individuals: Case, Contact and Outbreak Management Interim Guidance](#).

³ Self-isolation still may be required at the discretion of the local public health unit. Refer to the [COVID-19 Fully Immunized Individuals: Case, Contact and Outbreak Management Interim Guidance](#) for individuals with immunocompromise, and residents of high risk congregate living settings / inpatients.

⁴ Refer to [Provincial Testing Guidance](#).

Appendix B: Case and Contact Management in Schools for Household Members of High-Risk Contacts

Adapted from Appendix 11 of [Management of Cases and Contacts of COVID-19 in Ontario](#)



¹ For the purposes of case/contact/outbreak management, an individual is defined as fully immunized ≥ 14 days after receiving their second dose of a two-dose COVID-19 vaccine series or their first dose of a one-dose COVID-19 vaccine series that is [listed for emergency use](#) by the World Health Organization or approved by Health Canada. Individuals who are immunocompromised are excluded from this definition, in accordance with [COVID-19 Fully Immunized and Previously Positive Individuals: Case, Contact and Outbreak Management Interim Guidance](#).

² For the purposes of case/contact/outbreak management, an individual is defined as previously positive if they were a confirmed case of COVID-19 where their initial positive result was ≤ 90 days ago AND they have been [cleared from their initial infection](#). Individuals who are immunocompromised are excluded from this definition, in accordance with [COVID-19 Fully Immunized and Previously Positive Individuals: Case, Contact and Outbreak Management Interim Guidance](#).