



Greater Essex County District School Board

2017 School Climate Survey - Grades 4-6

Table of Contents

Demographics.....	2
Student Information.....	3
Comfort Level.....	4
Healthy Living & Well-Being.....	6
Diversity.....	8
Religious Accommodation.....	9
Safety.....	10
Bullying.....	12

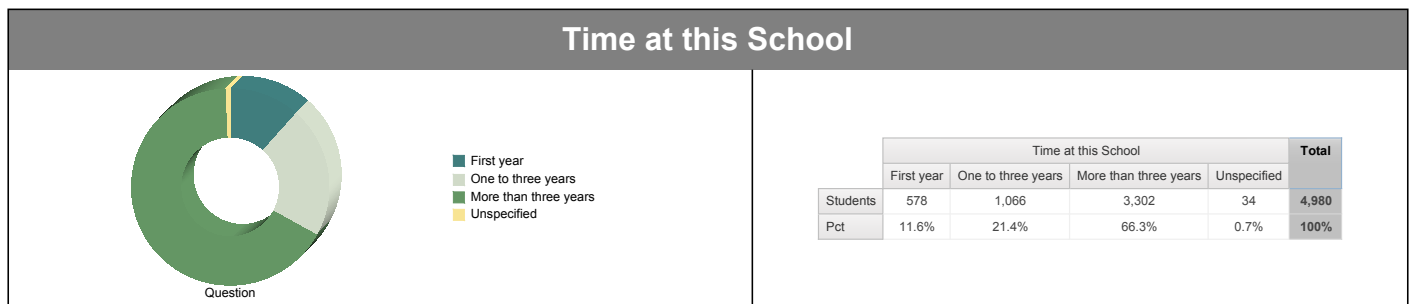
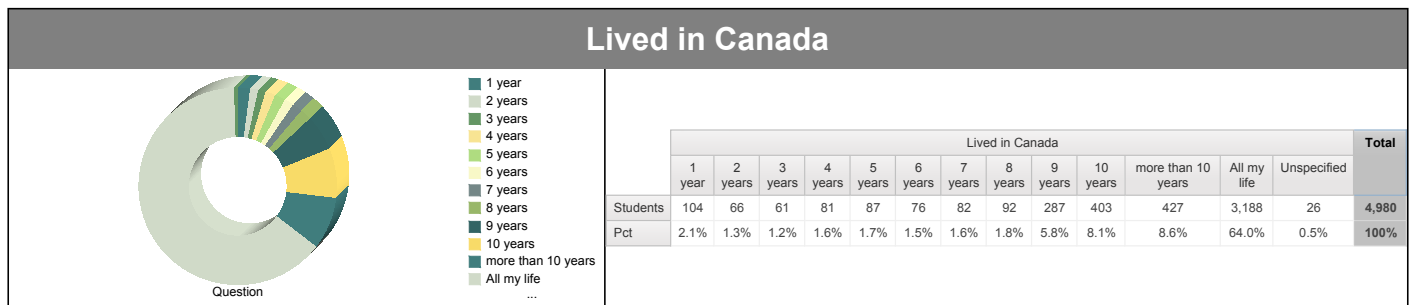
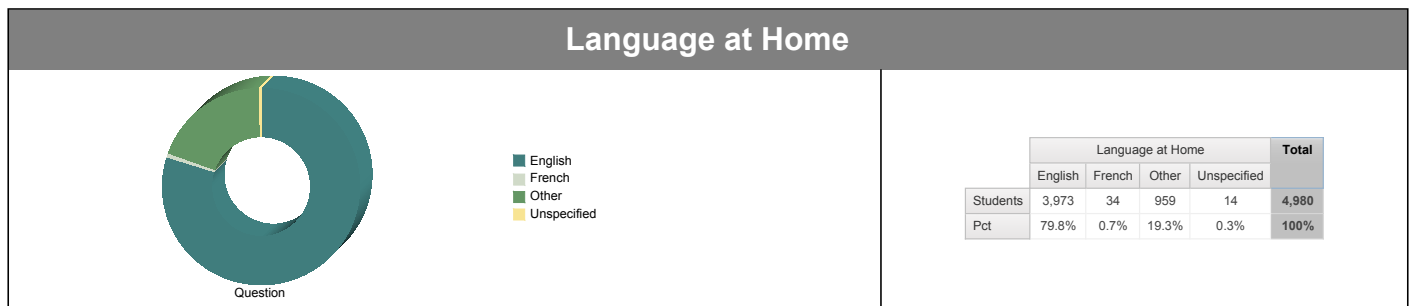
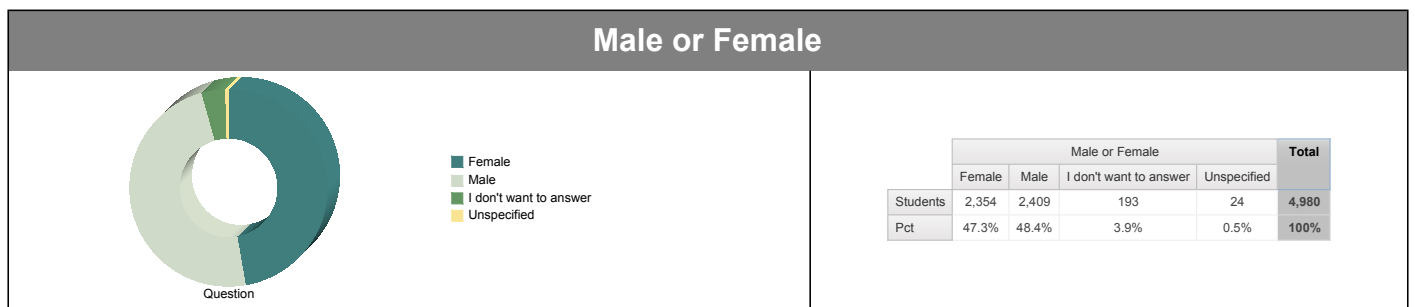
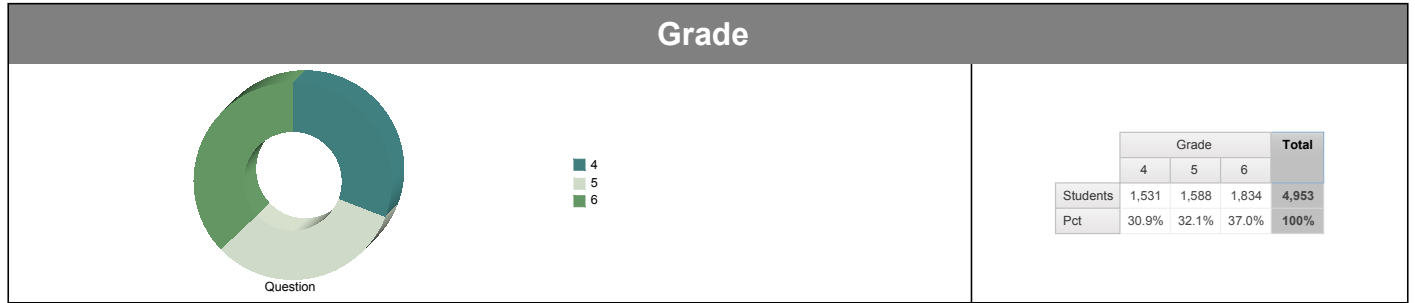


Greater Essex County District School Board

2017 School Climate Survey - Grades 4-6

Demographics

[Return to Table of Contents](#)



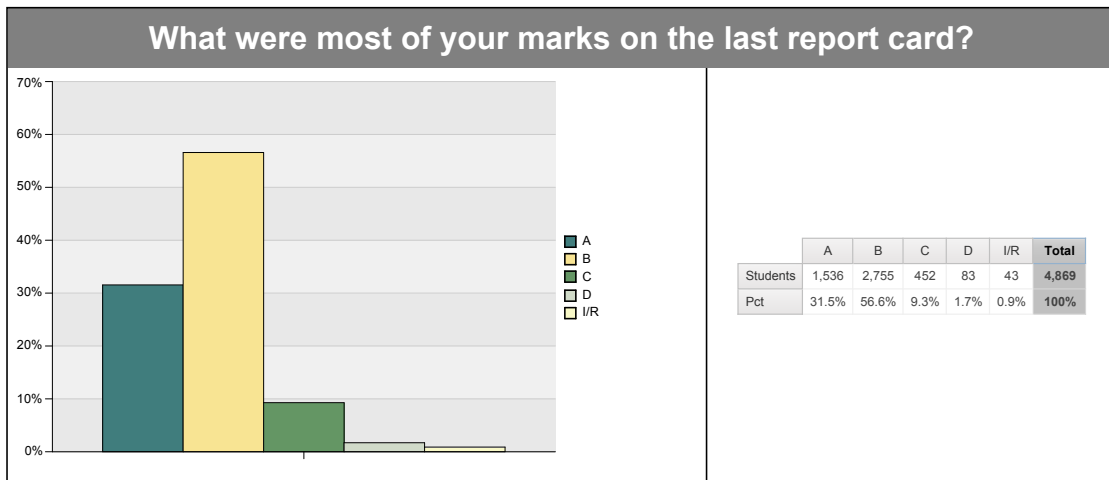
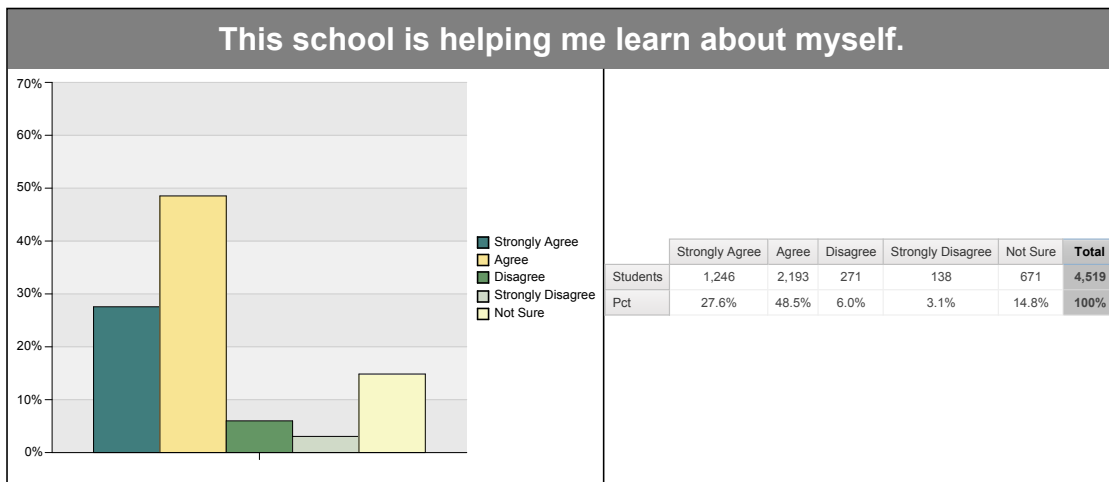
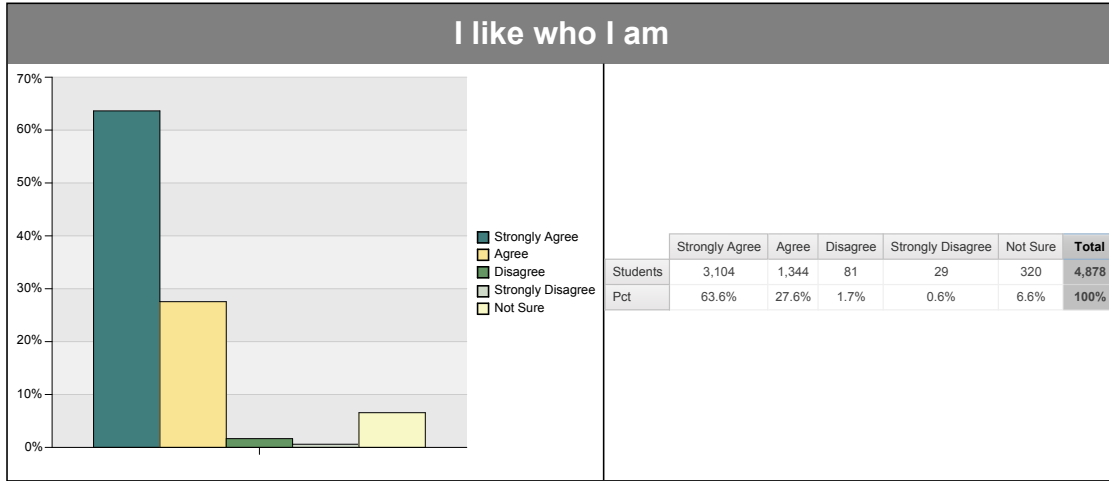


Greater Essex County District School Board

2017 School Climate Survey - Grades 4-6

Student Information

[Return to Table of Contents](#)



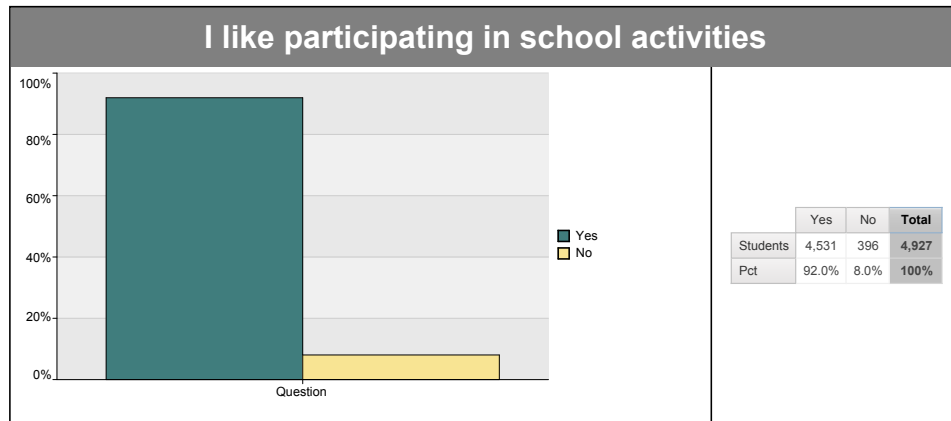
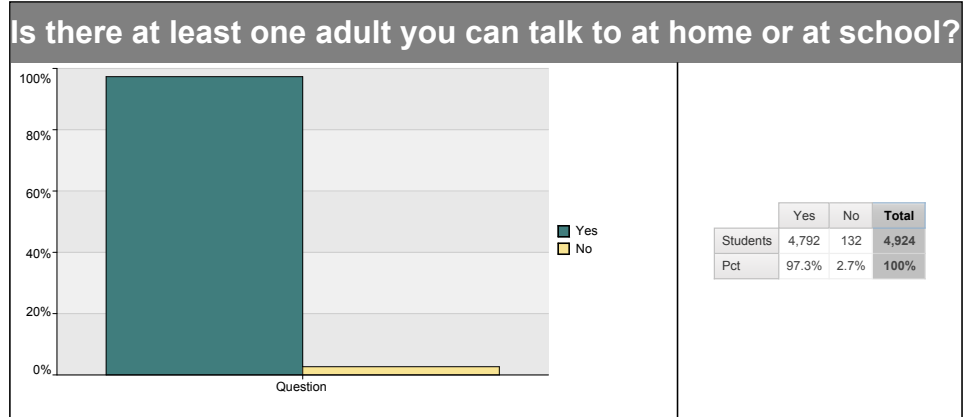
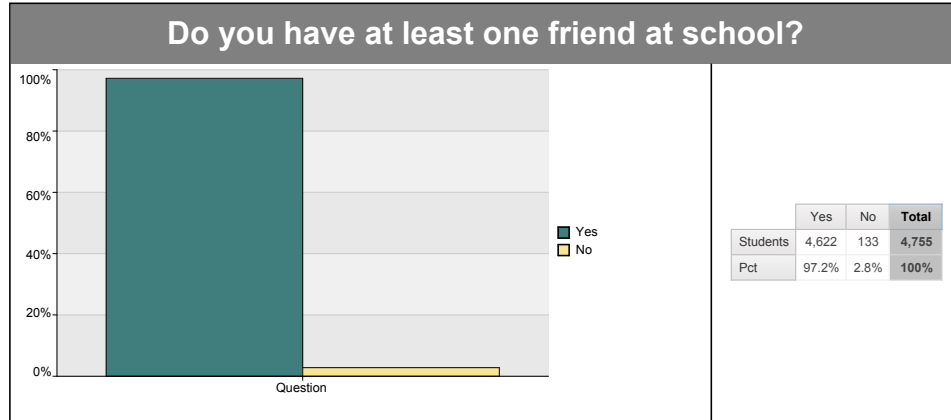


Greater Essex County District School Board

2017 School Climate Survey - Grades 4-6

Comfort Level

[Return to Table of Contents](#)



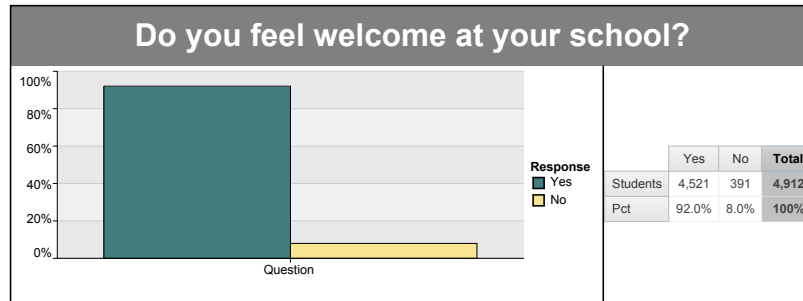


Greater Essex County District School Board

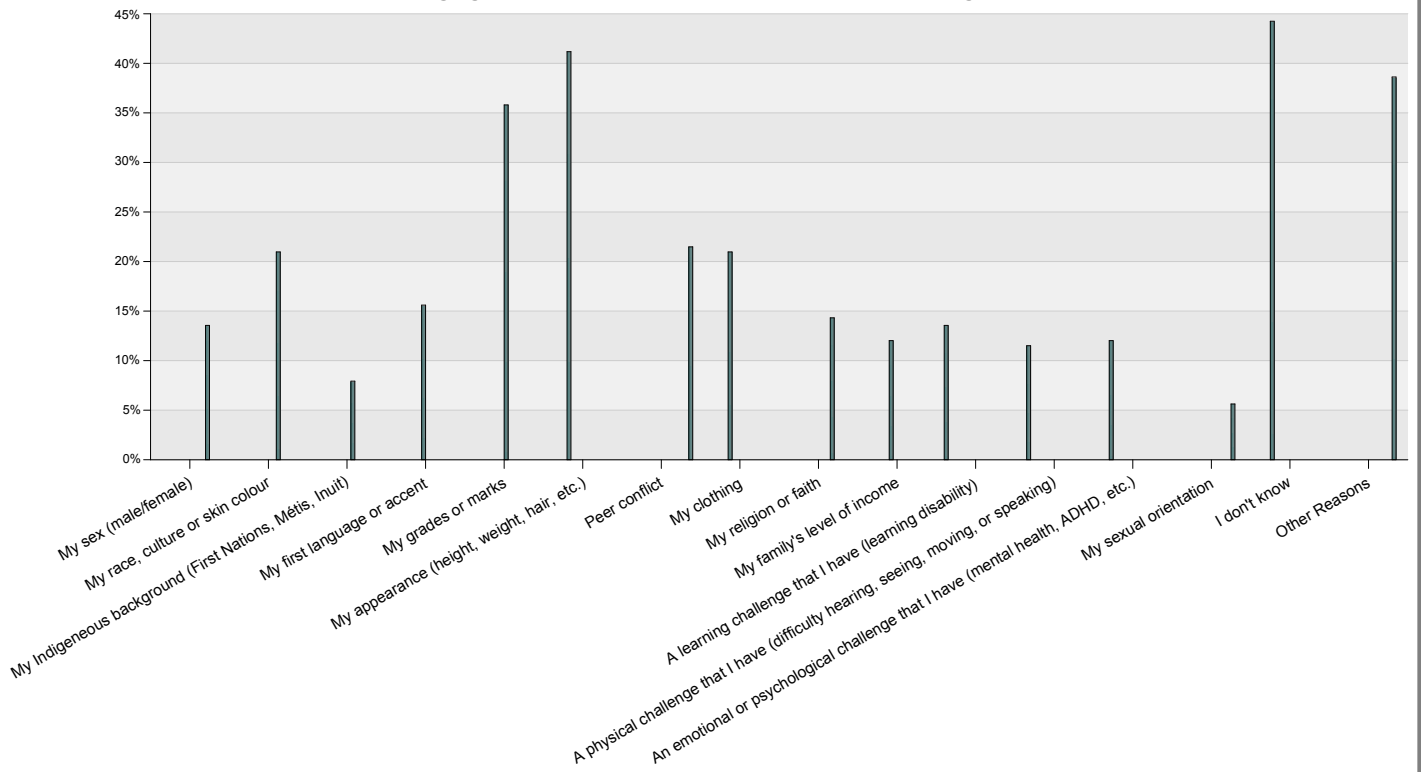
2017 School Climate Survey - Grades 4-6

Comfort Level

[Return to Table of Contents](#)



Reasons why you do not feel welcome at your school?



	Students	Pct
My sex (male/female)	53	13.6%
My race, culture or skin colour	82	21.0%
My Indigenous background (First Nations, Métis, Inuit)	31	7.9%
My first language or accent	61	15.6%
My grades or marks	140	35.8%
My appearance (height, weight, hair, etc.)	161	41.2%
Peer conflict	84	21.5%
My clothing	82	21.0%
My religion or faith	56	14.3%
My family's level of income	47	12.0%
A learning challenge that I have (learning disability)	53	13.6%
A physical challenge that I have (difficulty hearing, seeing, moving, or speaking)	45	11.5%
An emotional or psychological challenge that I have (mental health, ADHD, etc.)	47	12.0%
My sexual orientation	22	5.6%
I don't know	173	44.2%
Other Reasons	151	38.6%



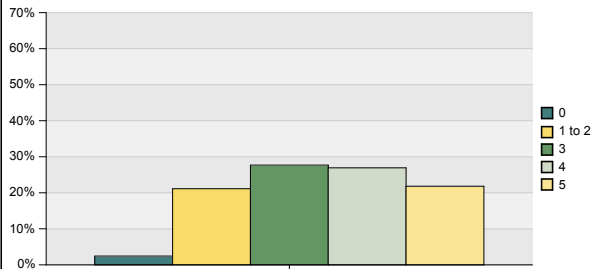
Greater Essex County District School Board

2017 School Climate Survey - Grades 4-6

Healthy Living & Well-Being

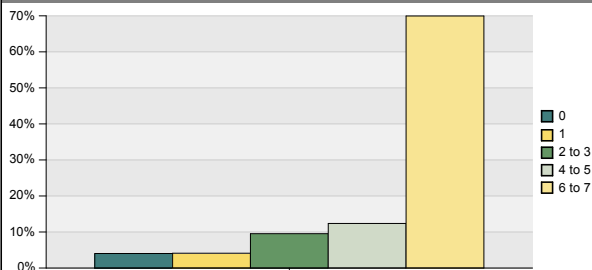
[Return to Table of Contents](#)

How many servings of fruits/vegetables do you eat on an average day?



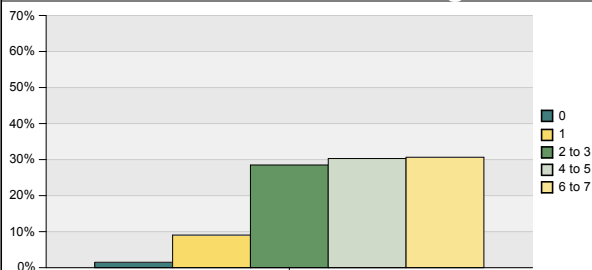
	0	1 to 2	3	4	5	Total
Students	120	1,042	1,365	1,328	1,076	4,931
Pct	2.4%	21.1%	27.7%	26.9%	21.8%	100%

During the past 7 days, how many days did you eat breakfast?



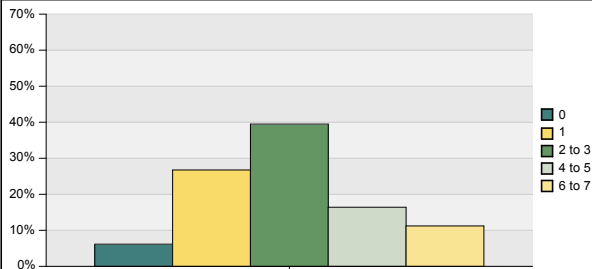
	0	1	2 to 3	4 to 5	6 to 7	Total
Students	199	203	471	611	3,455	4,939
Pct	4.0%	4.1%	9.5%	12.4%	70.0%	100%

How many hours do you spend moving (walking, running or other physical activities) including at school and home on an average day?



	0	1	2 to 3	4 to 5	6 to 7	Total
Students	72	434	1,367	1,453	1,470	4,796
Pct	1.5%	9.0%	28.5%	30.3%	30.7%	100%

How many hours do you spend watching TV, going on the computer, using a hand-held device or playing video games on an average school night?



	0	1	2 to 3	4 to 5	6 to 7	Total
Students	295	1,283	1,894	787	538	4,797
Pct	6.1%	26.7%	39.5%	16.4%	11.2%	100%



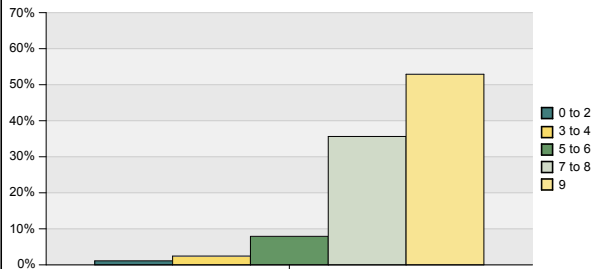
Greater Essex County District School Board

2017 School Climate Survey - Grades 4-6

Healthy Living & Well-Being

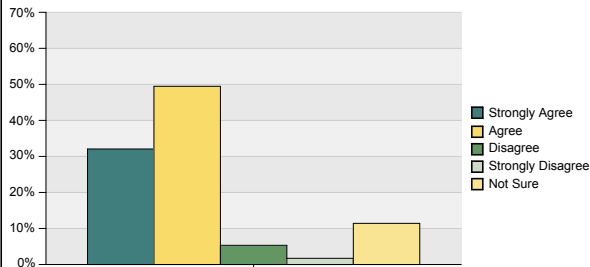
[Return to Table of Contents](#)

How many hours of sleep do I get on an average school night?



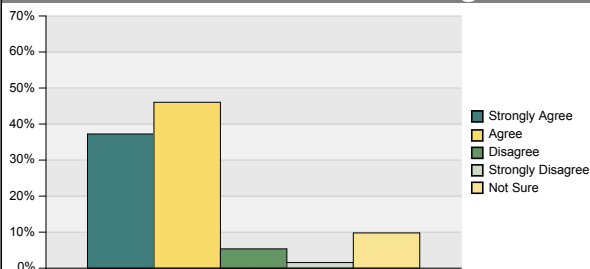
	0 to 2	3 to 4	5 to 6	7 to 8	9	Total
Students	55	120	390	1,756	2,607	4,928
Pct	1.1%	2.4%	7.9%	35.6%	52.9%	100%

There are programs, materials and equipment at school that encourage me to make healthy choices.



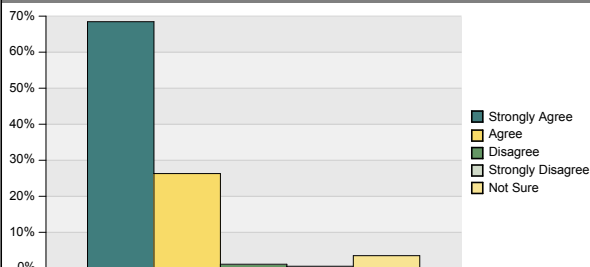
	Strongly Agree	Agree	Disagree	Strongly Disagree	Not Sure	Total
Students	1,583	2,442	263	85	564	4,937
Pct	32.1%	49.5%	5.3%	1.7%	11.4%	100%

There are adults and students at school who are healthy role models and help me to make good choices for my well-being.



	Strongly Agree	Agree	Disagree	Strongly Disagree	Not Sure	Total
Students	1,812	2,240	261	76	476	4,865
Pct	37.2%	46.0%	5.4%	1.6%	9.8%	100%

Healthy eating, physical activity and sleep are important to my "well-being".



	Strongly Agree	Agree	Disagree	Strongly Disagree	Not Sure	Total
Students	3,308	1,271	55	28	170	4,832
Pct	68.5%	26.3%	1.1%	0.6%	3.5%	100%



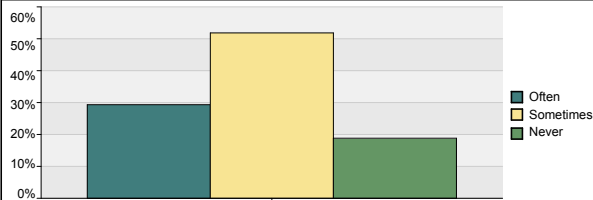
Greater Essex County District School Board

2017 School Climate Survey - Grades 4-6

Diversity

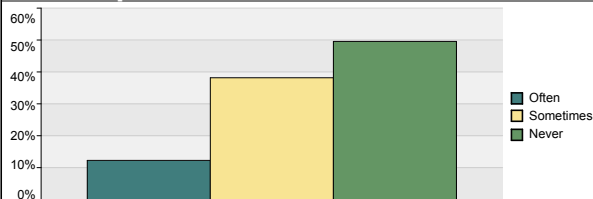
[Return to Table of Contents](#)

Since September at school, how often have you learned about the experiences/achievements of: Indigenous peoples?



	Often	Sometimes	Never	Total
Students	1,421	2,511	912	4,844
Pct	29.3%	51.8%	18.8%	100%

Since September at school, how often have you learned about the experiences/achievements of: People of various genders and sexual orientations?



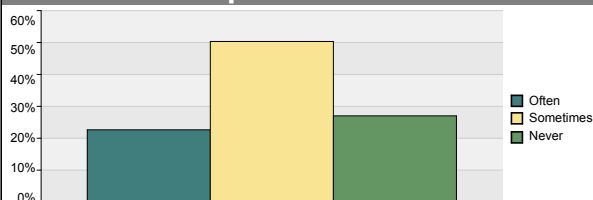
	Often	Sometimes	Never	Total
Students	588	1,830	2,376	4,794
Pct	12.3%	38.2%	49.6%	100%

Since September at school, how often have you learned about the experiences/achievements of: People of various races, cultures and skin colours?



	Often	Sometimes	Never	Total
Students	1,559	2,342	891	4,792
Pct	32.5%	48.9%	18.6%	100%

Since September at school, how often have you learned about the experiences/achievements of: Various religious/faith communities?



	Often	Sometimes	Never	Total
Students	1,081	2,403	1,290	4,774
Pct	22.6%	50.3%	27.0%	100%

Since September at school, how often have you learned about the experiences/achievements of: People with disabilities?



	Often	Sometimes	Never	Total
Students	1,213	2,490	1,127	4,830
Pct	25.1%	51.6%	23.3%	100%

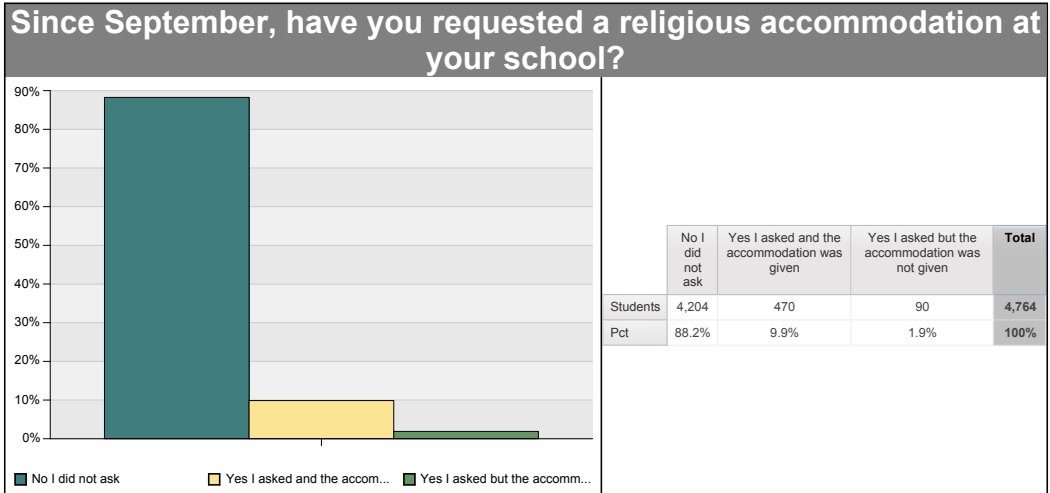


Greater Essex County District School Board

2017 School Climate Survey - Grades 4-6

Religious Accommodation

[Return to Table of Contents](#)



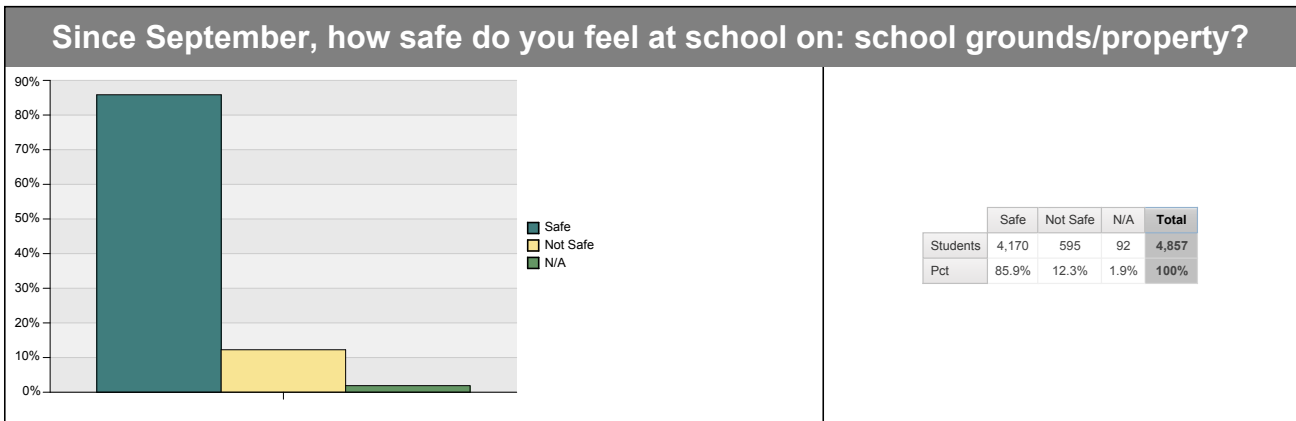
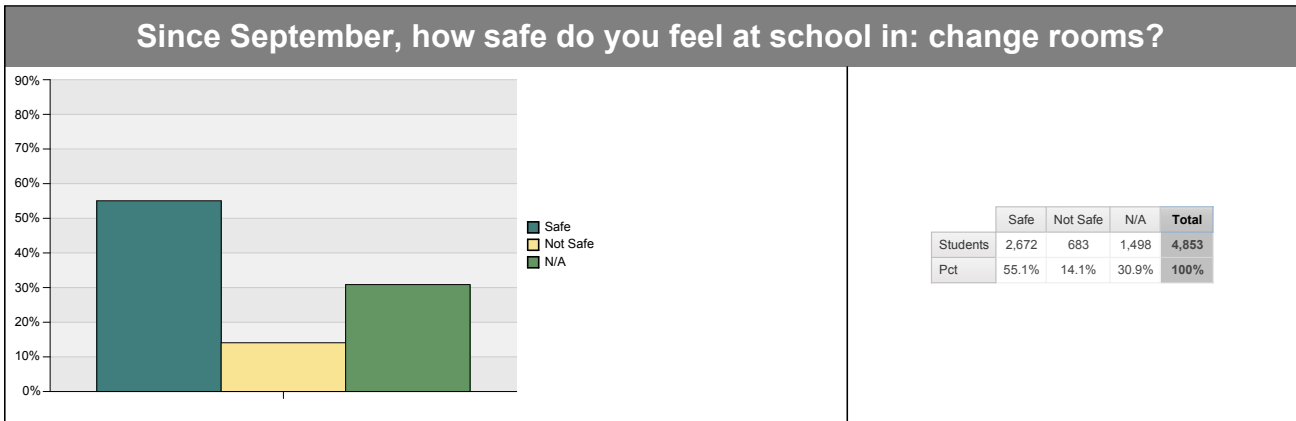
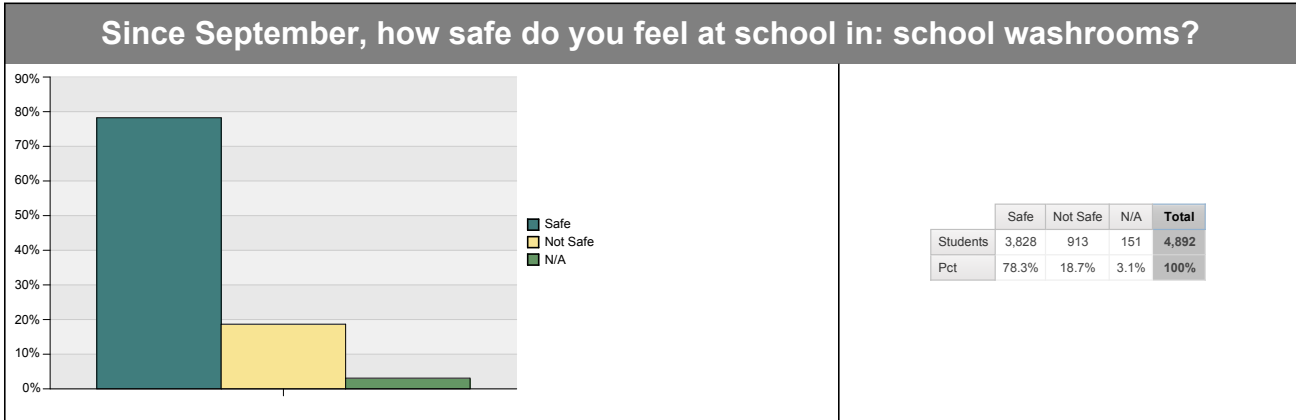


Greater Essex County District School Board

2017 School Climate Survey - Grades 4-6

Safety

[Return to Table of Contents](#)





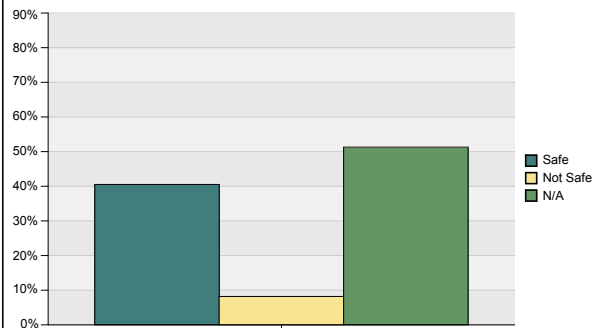
Greater Essex County District School Board

2017 School Climate Survey - Grades 4-6

Safety

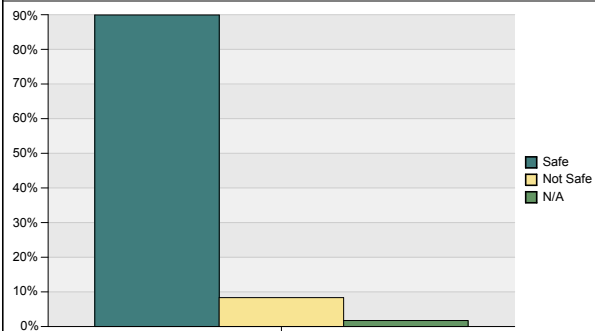
[Return to Table of Contents](#)

Since September, how safe do you feel at school in: stairways?



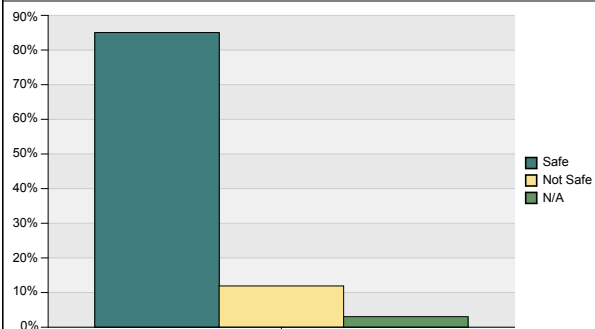
	Safe	Not Safe	N/A	Total
Students	1,964	397	2,486	4,847
Pct	40.5%	8.2%	51.3%	100%

Since September, how safe do you feel at school in: hallways?



	Safe	Not Safe	N/A	Total
Students	4,354	404	84	4,842
Pct	89.9%	8.3%	1.7%	100%

Since September, how safe do you feel at school in: on your way to and from school?



	Safe	Not Safe	N/A	Total
Students	4,108	575	147	4,830
Pct	85.1%	11.9%	3.0%	100%



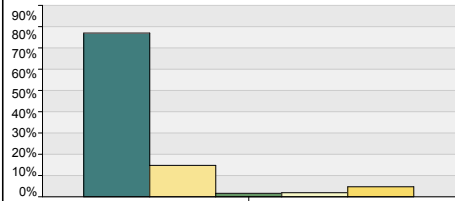
Greater Essex County District School Board

2017 School Climate Survey - Grades 4-6

Bullying

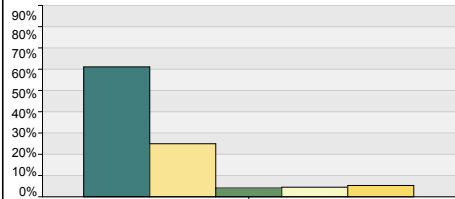
[Return to Table of Contents](#)

In past 4 weeks, have you been bullied by another student: physically?



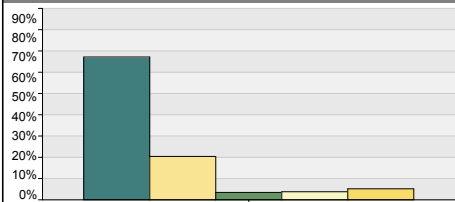
	Never	Once or twice	Every week	Many times a week	Don't know	Total
Students	3,742	718	79	93	229	4,861
Pct	77.0%	14.8%	1.6%	1.9%	4.7%	100%

In past 4 weeks, have you been bullied by another student: verbally?



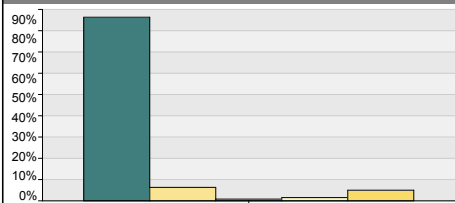
	Never	Once or twice	Every week	Many times a week	Don't know	Total
Students	2,963	1,210	200	219	258	4,850
Pct	61.1%	24.9%	4.1%	4.5%	5.3%	100%

In past 4 weeks, have you been bullied by another student: socially?



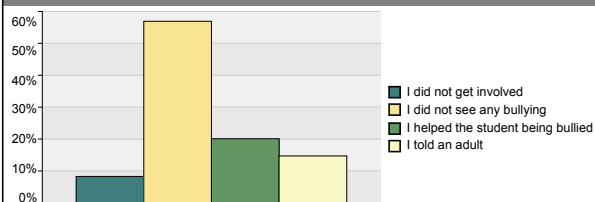
	Never	Once or twice	Every week	Many times a week	Don't know	Total
Students	3,242	985	168	183	250	4,828
Pct	67.2%	20.4%	3.5%	3.8%	5.2%	100%

In past 4 weeks, have you been bullied by another student: electronically?



	Never	Once or twice	Every week	Many times a week	Don't know	Total
Students	4,146	304	39	73	240	4,802
Pct	86.3%	6.3%	0.8%	1.5%	5.0%	100%

In the past 4 weeks, if you saw bullying at your school, what did you do?



	I did not get involved	I did not see any bullying	I helped the student being bullied	I told an adult	Total
Students	438	3,012	1,064	778	5,292
Pct	8.3%	56.9%	20.1%	14.7%	100%



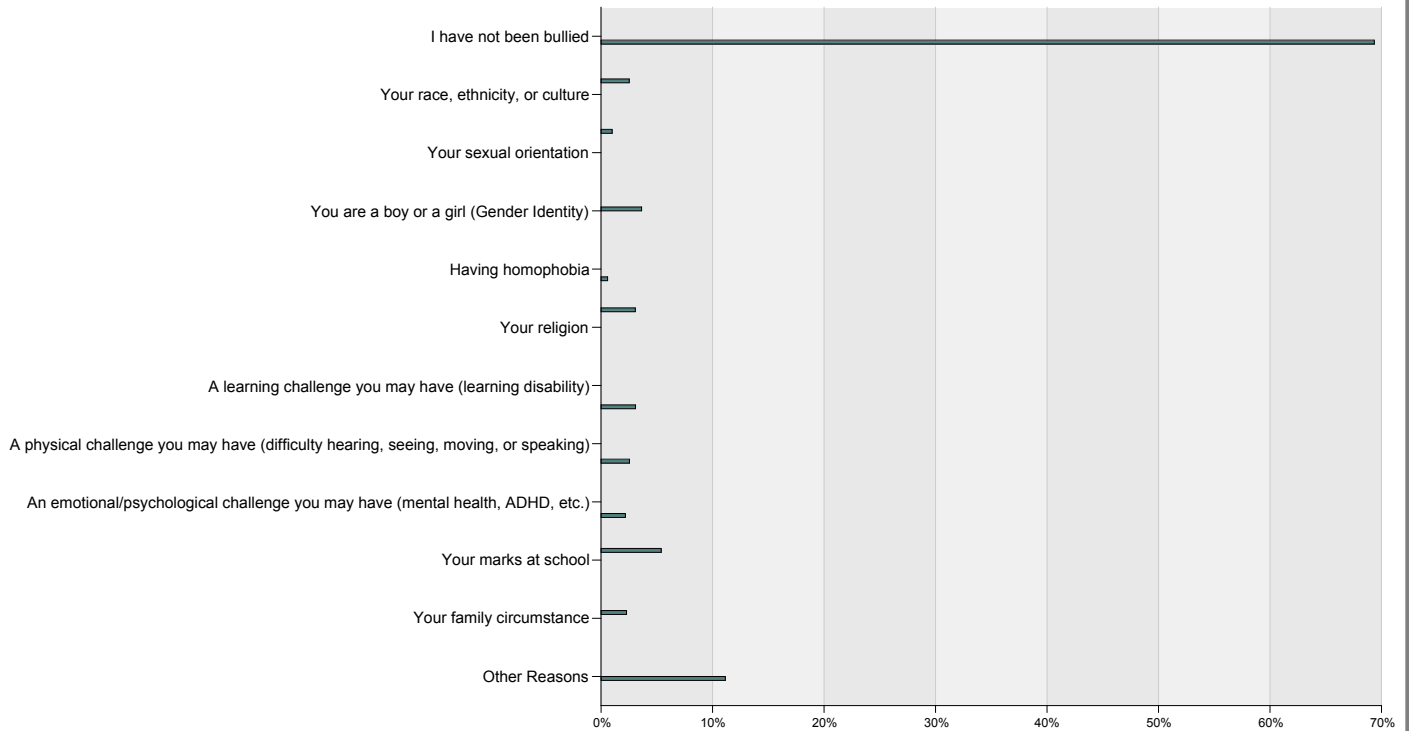
Greater Essex County District School Board

2017 School Climate Survey - Grades 4-6

Bullying

[Return to Table of Contents](#)

In past 4 weeks at school, have other students bullied/harrassed you because of:



	Students	Pct
I have not been bullied	3,435	69.4%
Your race, ethnicity, or culture	125	2.5%
Your sexual orientation	49	1.0%
You are a boy or a girl (Gender Identity)	180	3.6%
Having homophobia	29	0.6%
Your religion	152	3.1%
A learning challenge you may have (learning disability)	153	3.1%
A physical challenge you may have (difficulty hearing, seeing, moving, or speaking)	126	2.5%
An emotional/psychological challenge you may have (mental health, ADHD, etc.)	108	2.2%
Your marks at school	267	5.4%
Your family circumstance	113	2.3%
Other Reasons	552	11.1%