



# Greater Essex County District School Board

2017 School Climate Survey - Grades 7-8

## Table of Contents

Demographics.....	2
Student Information.....	3
Future Preparation.....	4
Comfort Level.....	6
Healthy Living & Well-Being.....	8
Diversity.....	10
Religious Accommodation.....	11
Safety.....	12
Bullying.....	14

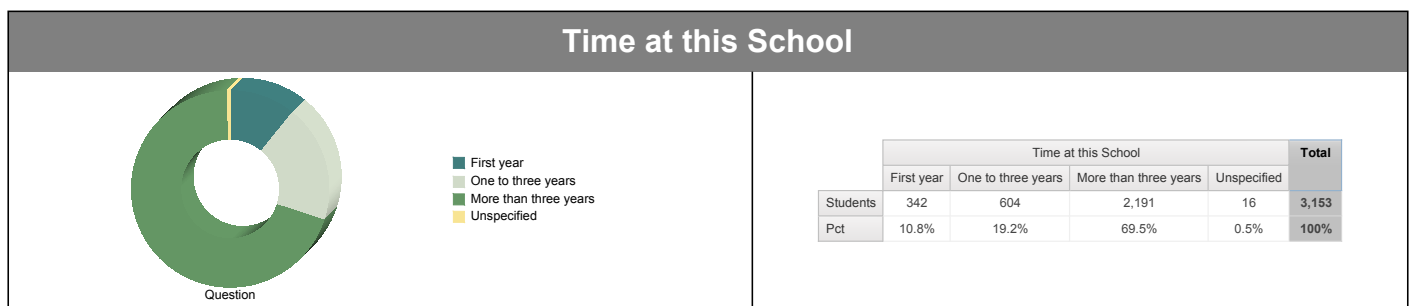
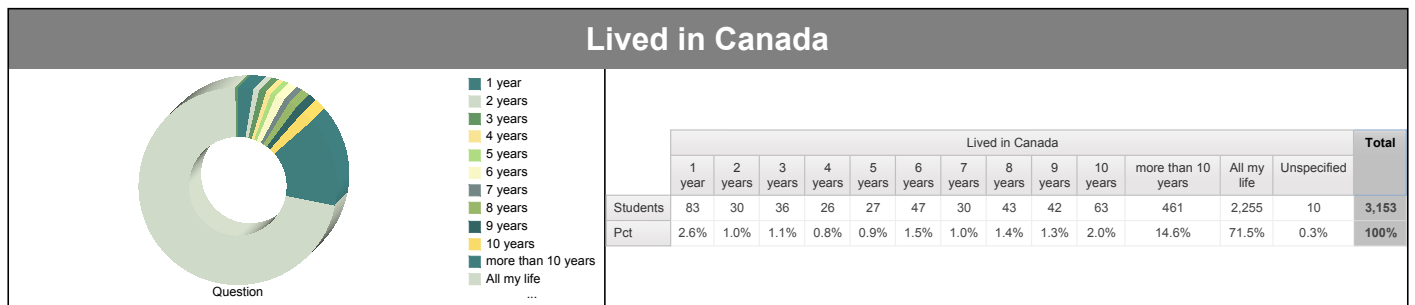
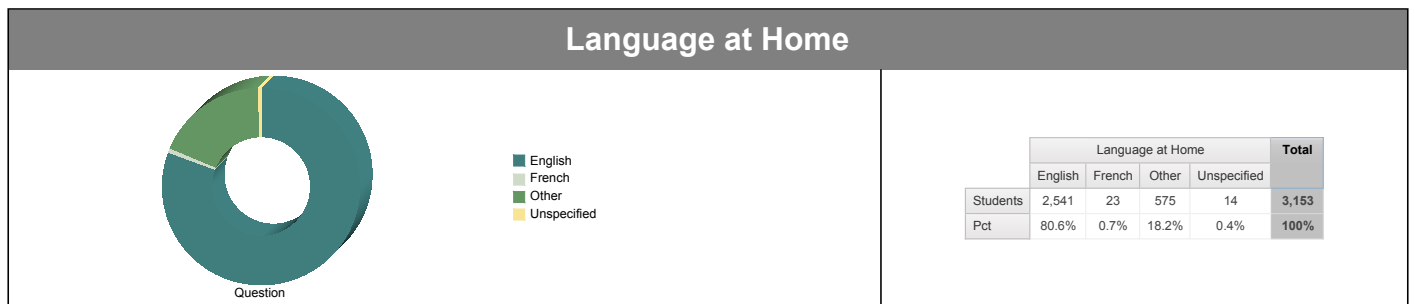
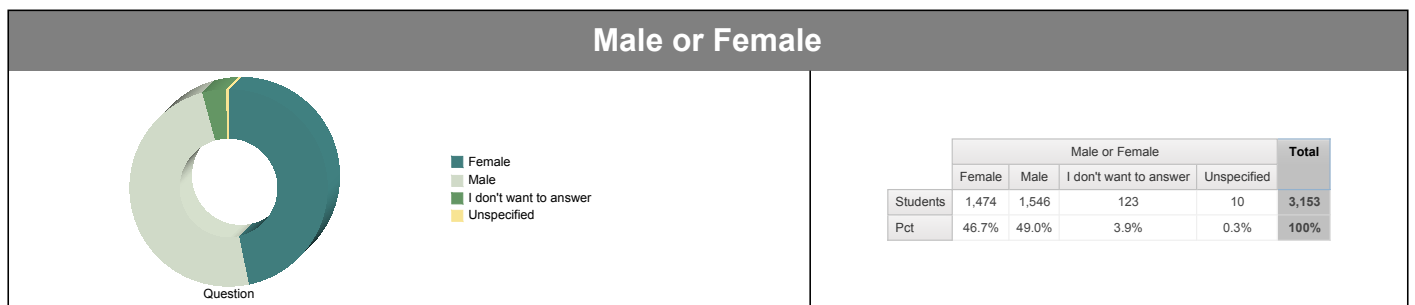
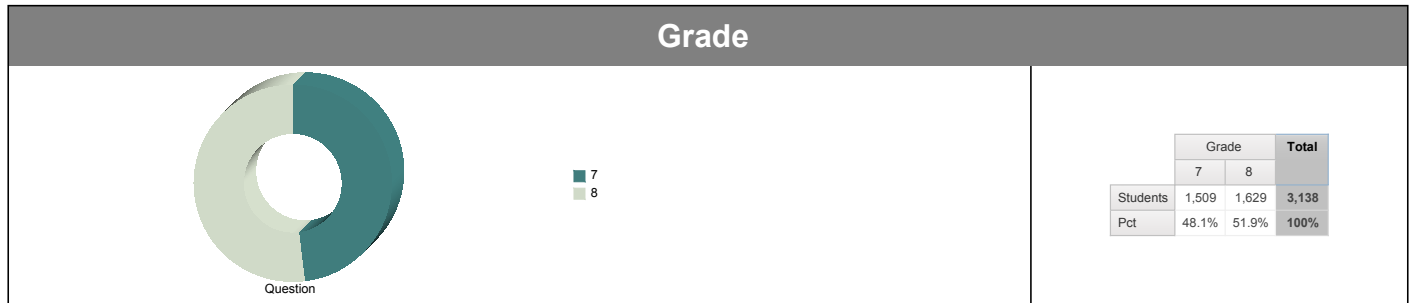


# Greater Essex County District School Board

## 2017 School Climate Survey - Grades 7-8

### Demographics

[Return to Table of Contents](#)



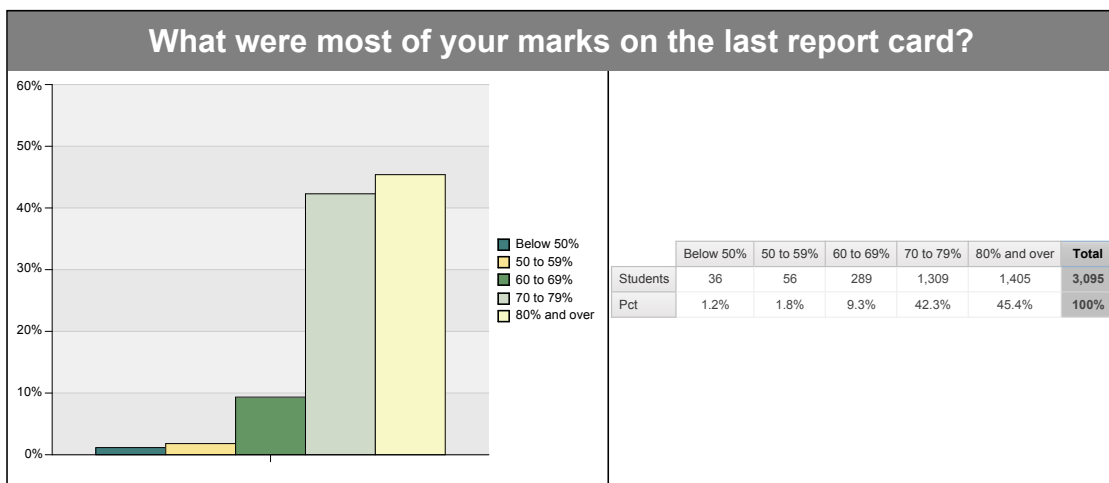
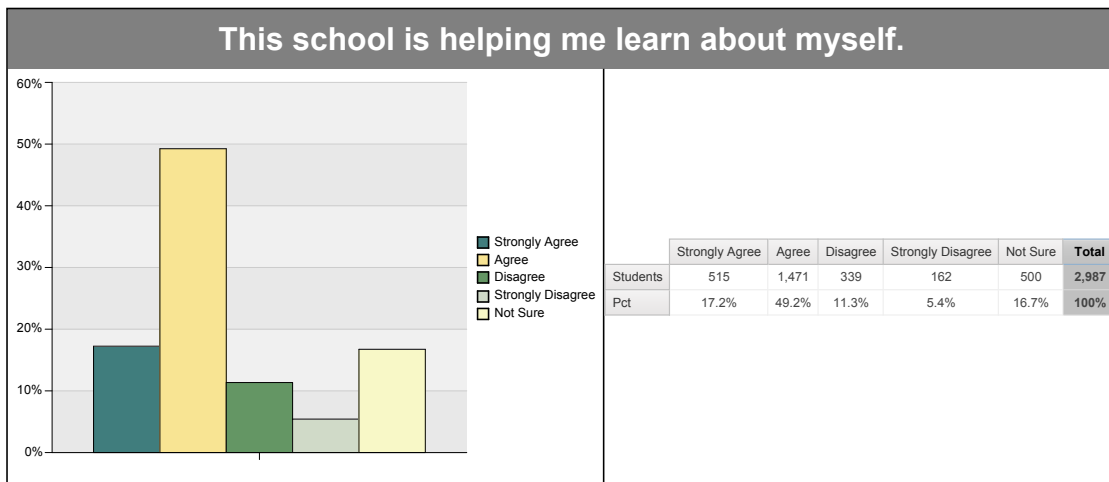
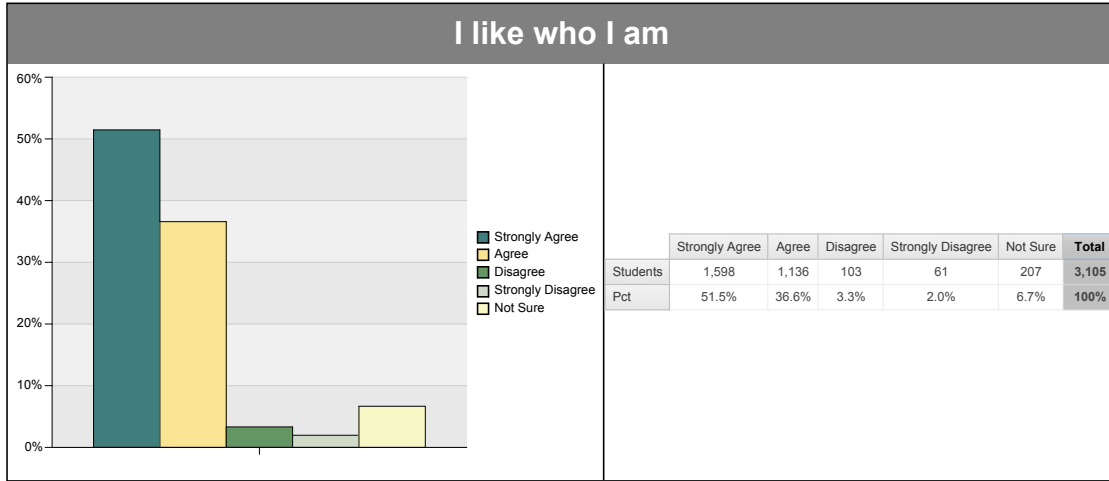


# Greater Essex County District School Board

## 2017 School Climate Survey - Grades 7-8

### Student Information

[Return to Table of Contents](#)





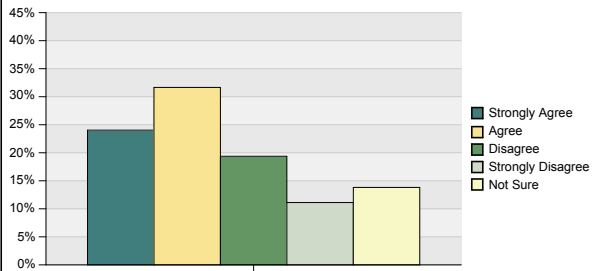
# Greater Essex County District School Board

## 2017 School Climate Survey - Grades 7-8

### Future Preparation

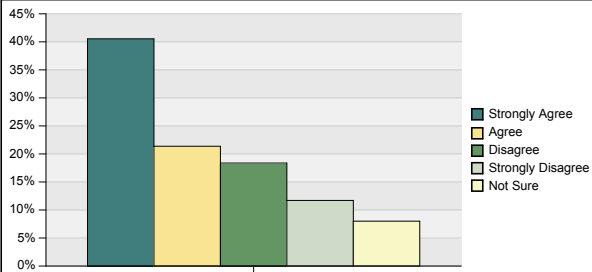
[Return to Table of Contents](#)

#### I have met with high school teachers, the principal, the guidance department.



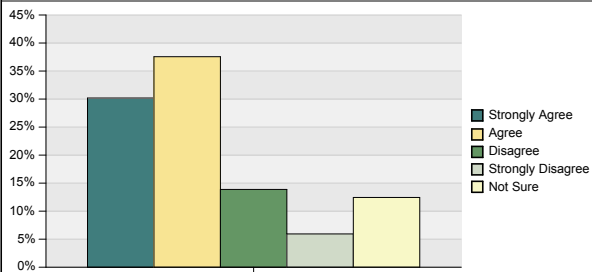
	Strongly Agree	Agree	Disagree	Strongly Disagree	Not Sure	Total
Students	722	951	582	334	415	3,004
Pct	24.0%	31.7%	19.4%	11.1%	13.8%	100%

#### I have visited the high school.



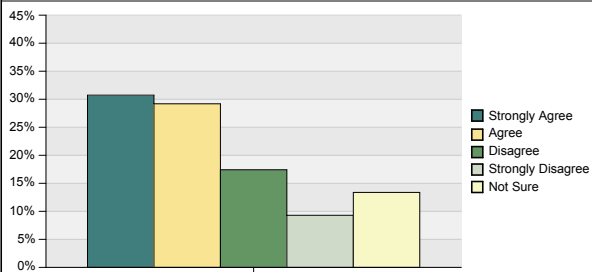
	Strongly Agree	Agree	Disagree	Strongly Disagree	Not Sure	Total
Students	1,216	641	551	351	240	2,999
Pct	40.5%	21.4%	18.4%	11.7%	8.0%	100%

#### I have participated in various grade 7 and 8 events to help prepare me for high school.



	Strongly Agree	Agree	Disagree	Strongly Disagree	Not Sure	Total
Students	905	1,126	416	178	373	2,998
Pct	30.2%	37.6%	13.9%	5.9%	12.4%	100%

#### I have received enough information regarding course selection.



	Strongly Agree	Agree	Disagree	Strongly Disagree	Not Sure	Total
Students	919	873	521	278	400	2,991
Pct	30.7%	29.2%	17.4%	9.3%	13.4%	100%



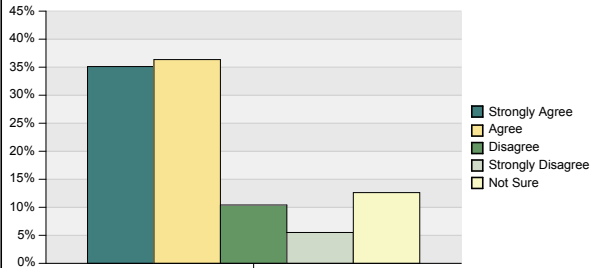
# Greater Essex County District School Board

## 2017 School Climate Survey - Grades 7-8

### Future Preparation

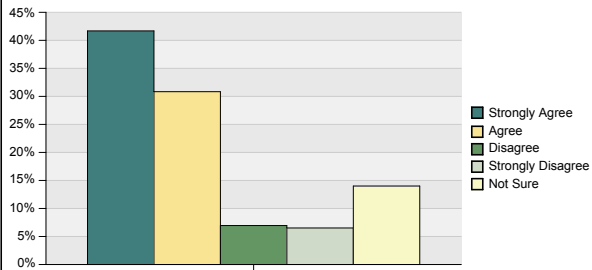
[Return to Table of Contents](#)

#### I have been made aware of various opportunities I may have at high school including extra-curricular activities.



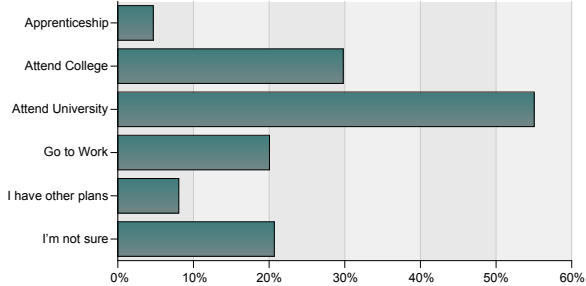
	Strongly Agree	Agree	Disagree	Strongly Disagree	Not Sure	Total
Students	1,046	1,083	310	164	376	2,979
Pct	35.1%	36.4%	10.4%	5.5%	12.6%	100%

#### I am excited about going to high school.



	Strongly Agree	Agree	Disagree	Strongly Disagree	Not Sure	Total
Students	1,253	927	209	196	421	3,006
Pct	41.7%	30.8%	7.0%	6.5%	14.0%	100%

#### What do you plan to do immediately after high school?



	Apprenticeship	Attend College	Attend University	Go to Work	I have other plans	I'm not sure	Total
Students	147	935	1,727	629	253	649	4,340
Pct	4.7%	29.8%	55.0%	20.0%	8.1%	20.7%	

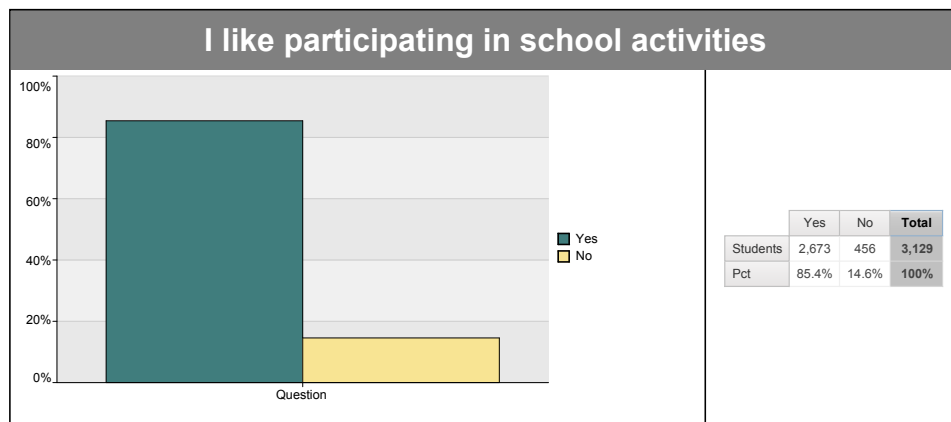
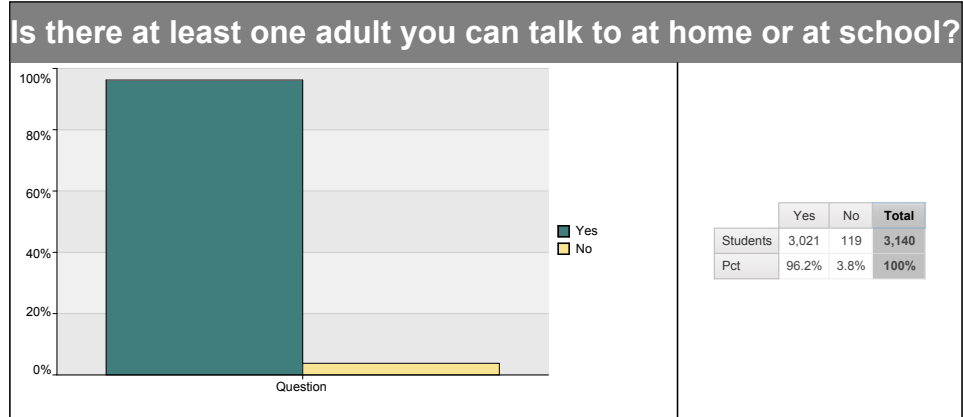
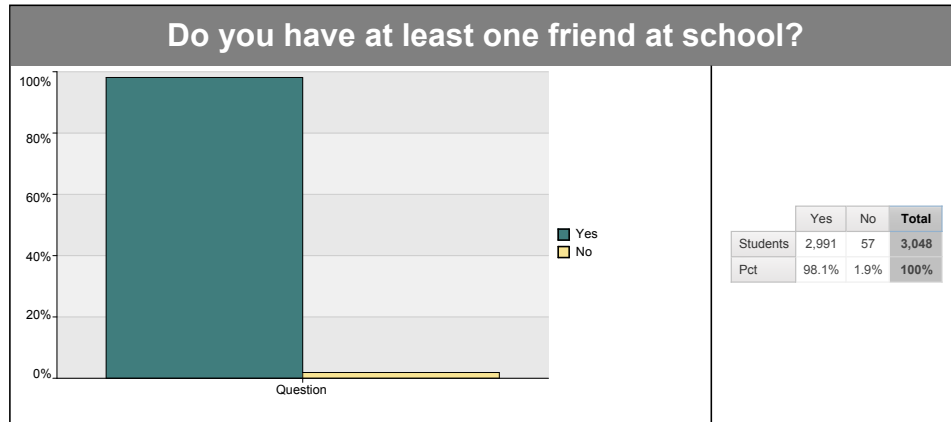


# Greater Essex County District School Board

## 2017 School Climate Survey - Grades 7-8

### Comfort Level

[Return to Table of Contents](#)



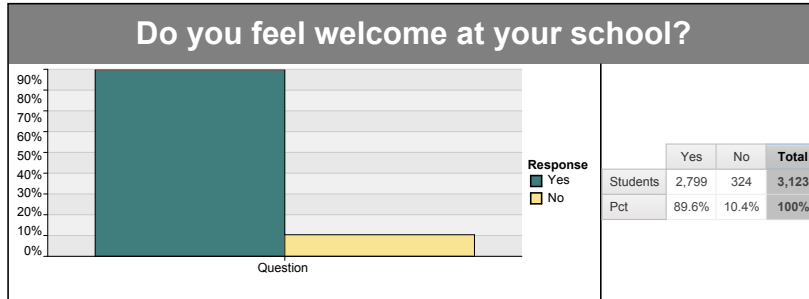


# Greater Essex County District School Board

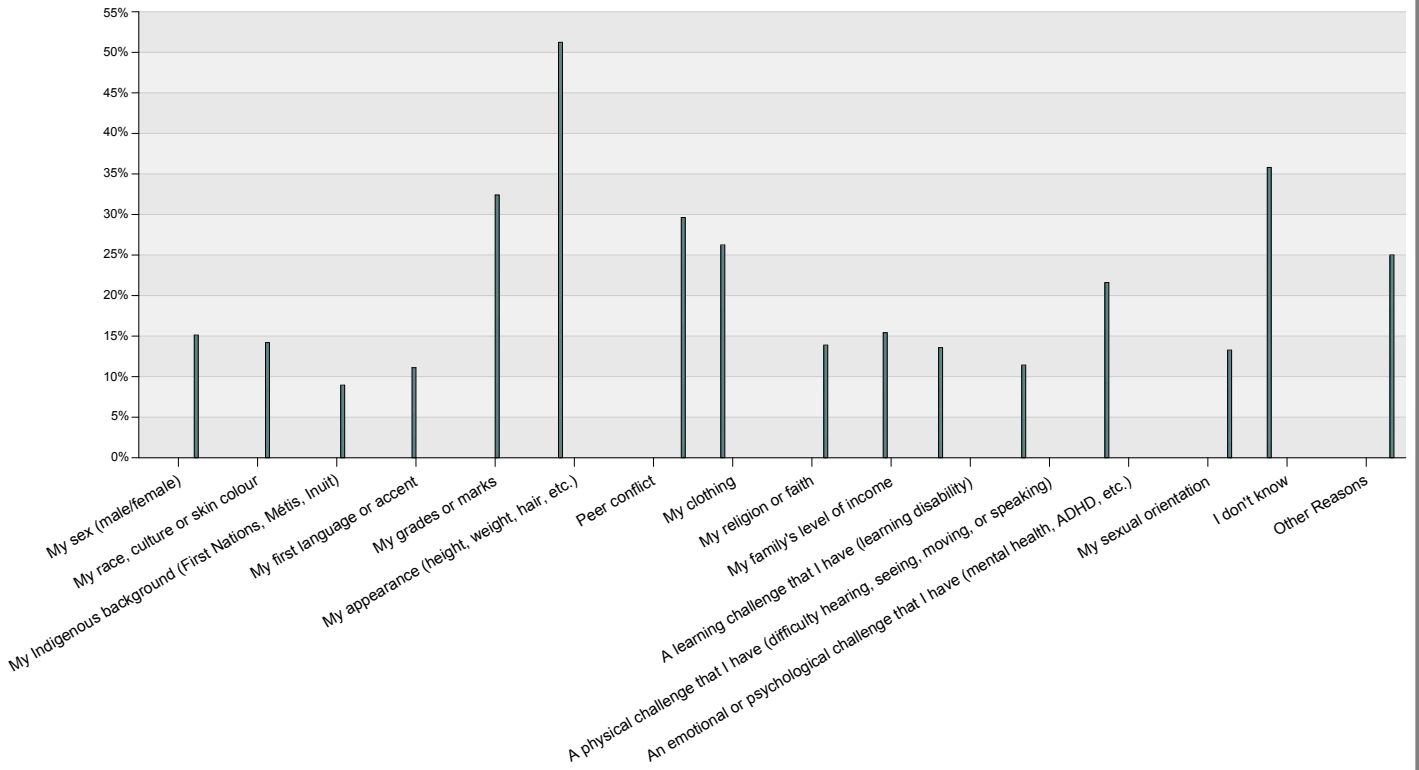
## 2017 School Climate Survey - Grades 7-8

### Comfort Level

[Return to Table of Contents](#)



### Reasons why you do not feel welcome at your school?



	Students	Pct
My sex (male/female)	49	15.1%
My race, culture or skin colour	46	14.2%
My Indigenous background (First Nations, Métis, Inuit)	29	9.0%
My first language or accent	36	11.1%
My grades or marks	105	32.4%
My appearance (height, weight, hair, etc.)	166	51.2%
Peer conflict	96	29.6%
My clothing	85	26.2%
My religion or faith	45	13.9%
My family's level of income	50	15.4%
A learning challenge that I have (learning disability)	44	13.6%
A physical challenge that I have (difficulty hearing, seeing, moving, or speaking)	37	11.4%
An emotional or psychological challenge that I have (mental health, ADHD, etc.)	70	21.6%
My sexual orientation	43	13.3%
I don't know	116	35.8%
Other Reasons	81	25.0%



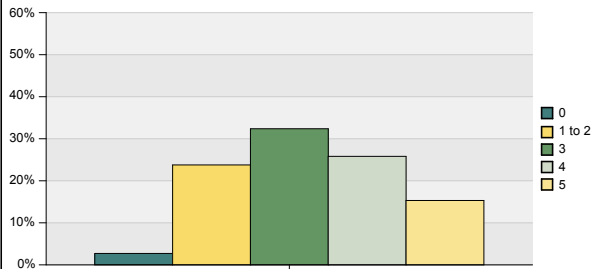
# Greater Essex County District School Board

2017 School Climate Survey - Grades 7-8

## Healthy Living & Well-Being

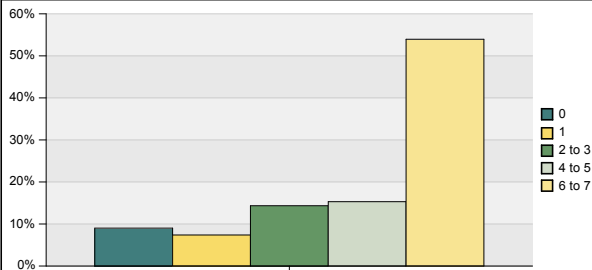
[Return to Table of Contents](#)

### How many servings of fruits/vegetables do you eat on an average day?



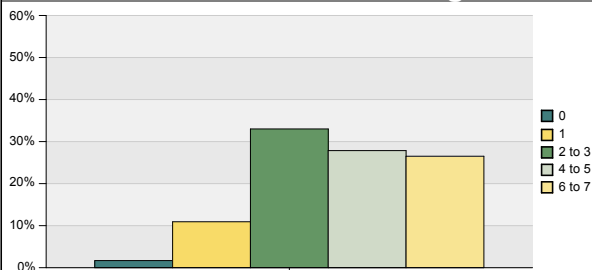
	0	1 to 2	3	4	5	Total
Students	85	745	1,015	809	480	3,134
Pct	2.7%	23.8%	32.4%	25.8%	15.3%	100%

### During the past 7 days, how many days did you eat breakfast?



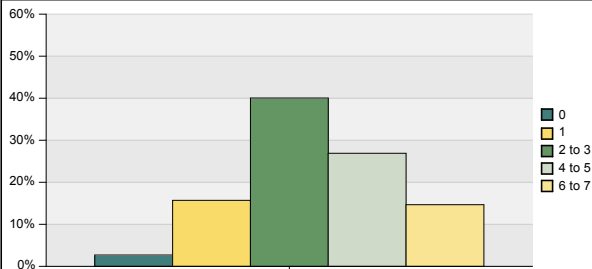
	0	1	2 to 3	4 to 5	6 to 7	Total
Students	282	231	449	479	1,688	3,129
Pct	9.0%	7.4%	14.3%	15.3%	53.9%	100%

### How many hours do you spend moving (walking, running or other physical activities) including at school and home on an average day?



	0	1	2 to 3	4 to 5	6 to 7	Total
Students	52	335	1,012	854	813	3,066
Pct	1.7%	10.9%	33.0%	27.9%	26.5%	100%

### How many hours do you spend watching TV, going on the computer, using a hand-held device or playing video games on an average school night?



	0	1	2 to 3	4 to 5	6 to 7	Total
Students	83	484	1,234	829	452	3,082
Pct	2.7%	15.7%	40.0%	26.9%	14.7%	100%





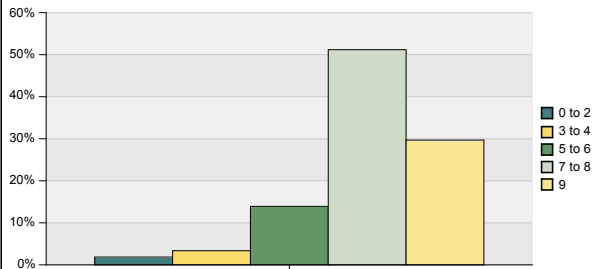
# Greater Essex County District School Board

## 2017 School Climate Survey - Grades 7-8

### Healthy Living & Well-Being

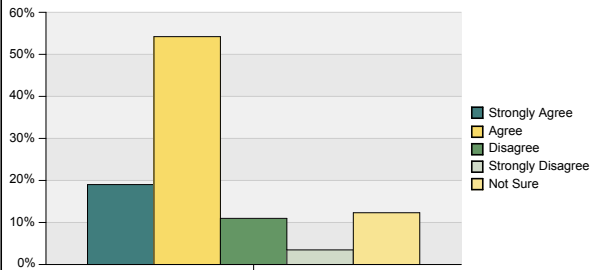
[Return to Table of Contents](#)

#### How many hours of sleep do I get on an average school night?



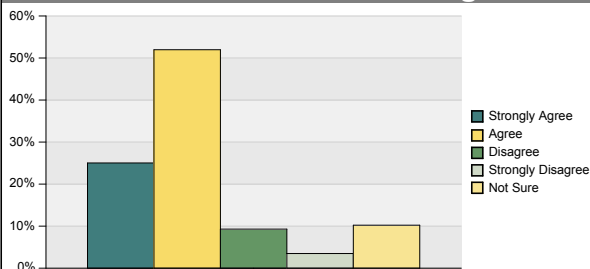
	0 to 2	3 to 4	5 to 6	7 to 8	9	Total
Students	58	105	435	1,600	928	3,126
Pct	1.9%	3.4%	13.9%	51.2%	29.7%	100%

#### There are programs, materials and equipment at school that encourage me to make healthy choices.



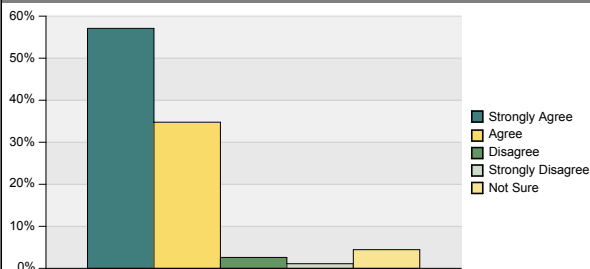
	Strongly Agree	Agree	Disagree	Strongly Disagree	Not Sure	Total
Students	596	1,699	344	109	386	3,134
Pct	19.0%	54.2%	11.0%	3.5%	12.3%	100%

#### There are adults and students at school who are healthy role models and help me to make good choices for my well-being.



	Strongly Agree	Agree	Disagree	Strongly Disagree	Not Sure	Total
Students	776	1,611	288	108	317	3,100
Pct	25.0%	52.0%	9.3%	3.5%	10.2%	100%

#### Healthy eating, physical activity and sleep are important to my "well-being".



	Strongly Agree	Agree	Disagree	Strongly Disagree	Not Sure	Total
Students	1,760	1,072	80	34	137	3,083
Pct	57.1%	34.8%	2.6%	1.1%	4.4%	100%



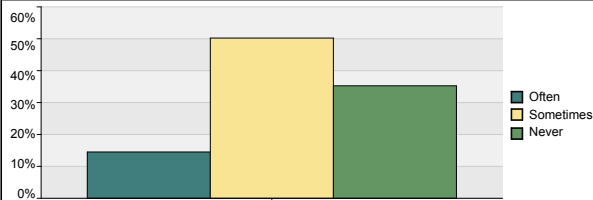
# Greater Essex County District School Board

## 2017 School Climate Survey - Grades 7-8

### Diversity

[Return to Table of Contents](#)

Since September at school, how often have you learned about the experiences/achievements of: People of various genders and sexual orientations?



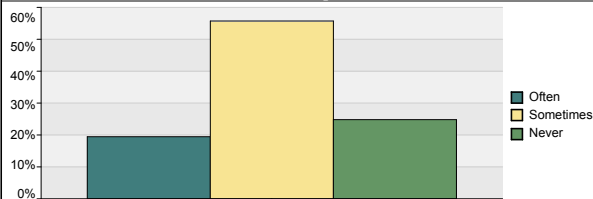
	Often	Sometimes	Never	Total
Students	449	1,554	1,091	3,094
Pct	14.5%	50.2%	35.3%	100%

Since September at school, how often have you learned about the experiences/achievements of: Indigenous peoples?



	Often	Sometimes	Never	Total
Students	787	1,786	537	3,110
Pct	25.3%	57.4%	17.3%	100%

Since September at school, how often have you learned about the experiences/achievements of: People with disabilities?



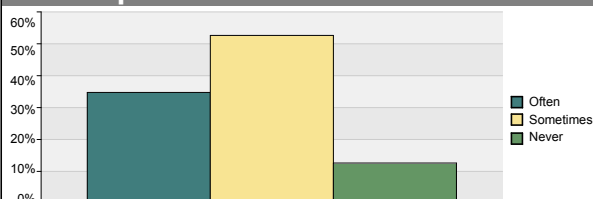
	Often	Sometimes	Never	Total
Students	603	1,727	769	3,099
Pct	19.5%	55.7%	24.8%	100%

Since September at school, how often have you learned about the experiences/achievements of: Various religious/faith communities?



	Often	Sometimes	Never	Total
Students	595	1,647	849	3,091
Pct	19.2%	53.3%	27.5%	100%

Since September at school, how often have you learned about the experiences/achievements of: People of various races, cultures and skin colours?



	Often	Sometimes	Never	Total
Students	1,071	1,622	389	3,082
Pct	34.8%	52.6%	12.6%	100%

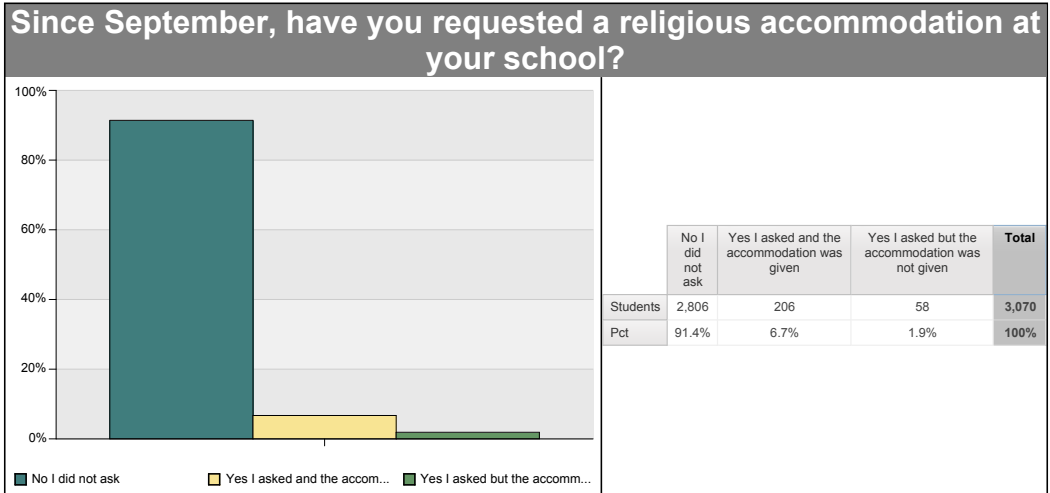


# Greater Essex County District School Board

2017 School Climate Survey - Grades 7-8

## Religious Accommodation

[Return to Table of Contents](#)





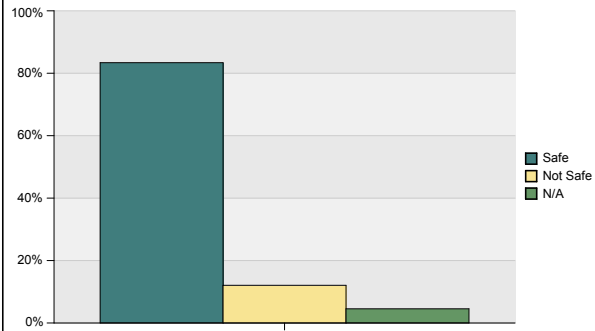
# Greater Essex County District School Board

## 2017 School Climate Survey - Grades 7-8

### Safety

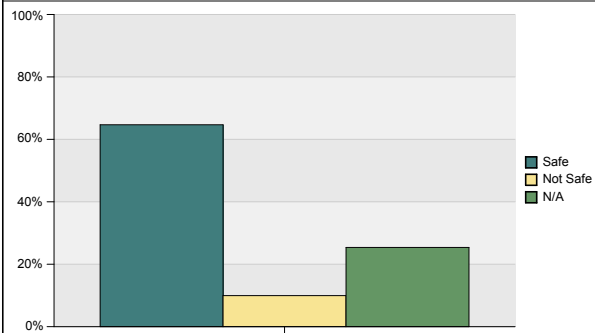
[Return to Table of Contents](#)

#### Since September, how safe do you feel at school in: school washrooms?



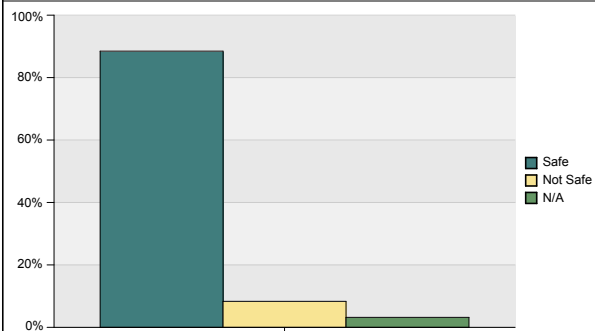
	Safe	Not Safe	N/A	Total
Students	2,605	377	142	3,124
Pct	83.4%	12.1%	4.5%	100%

#### Since September, how safe do you feel at school in: change rooms?



	Safe	Not Safe	N/A	Total
Students	2,016	310	791	3,117
Pct	64.7%	9.9%	25.4%	100%

#### Since September, how safe do you feel at school on: school grounds/property?



	Safe	Not Safe	N/A	Total
Students	2,740	258	99	3,097
Pct	88.5%	8.3%	3.2%	100%



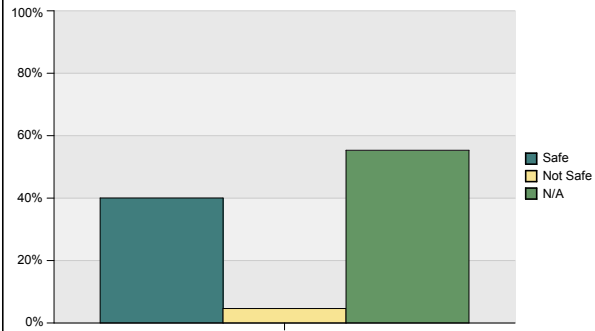
# Greater Essex County District School Board

## 2017 School Climate Survey - Grades 7-8

### Safety

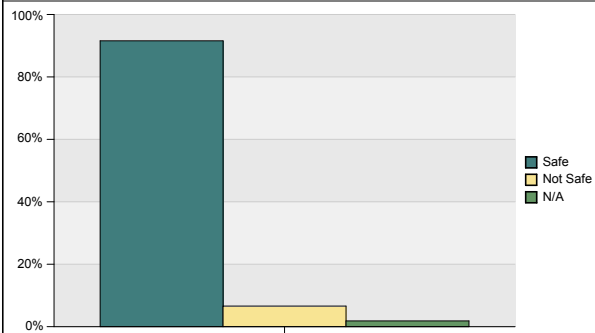
[Return to Table of Contents](#)

#### Since September, how safe do you feel at school in: stairways?



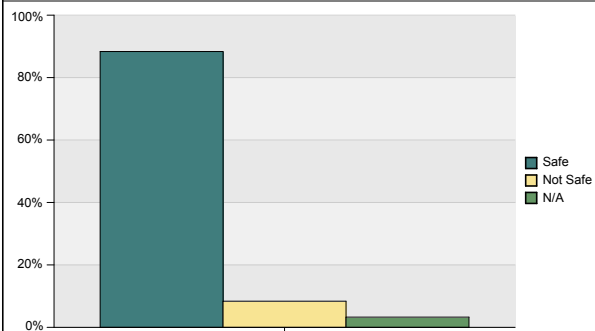
	Safe	Not Safe	N/A	Total
Students	1,244	144	1,719	3,107
Pct	40.0%	4.6%	55.3%	100%

#### Since September, how safe do you feel at school in: hallways?



	Safe	Not Safe	N/A	Total
Students	2,835	204	57	3,096
Pct	91.6%	6.6%	1.8%	100%

#### Since September, how safe do you feel at school in: on your way to and from school?



	Safe	Not Safe	N/A	Total
Students	2,754	261	102	3,117
Pct	88.4%	8.4%	3.3%	100%



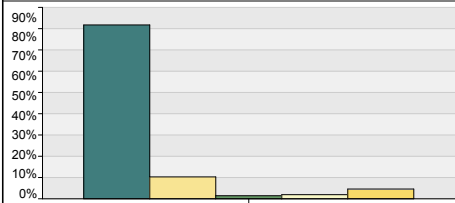
# Greater Essex County District School Board

## 2017 School Climate Survey - Grades 7-8

### Bullying

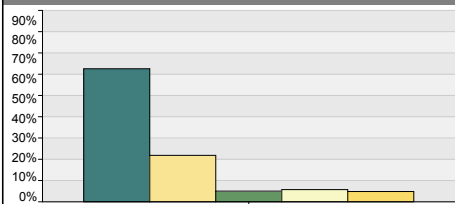
[Return to Table of Contents](#)

#### In past 4 weeks, have you been bullied by another student: physically?



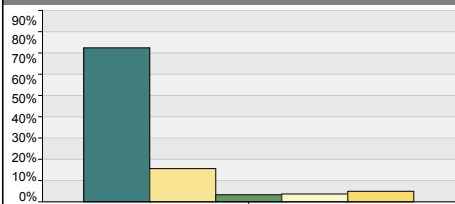
	Never	Once or twice	Every week	Many times a week	Don't know	Total
Students	2,535	319	45	60	142	3,101
Pct	81.7%	10.3%	1.5%	1.9%	4.6%	100%

#### In past 4 weeks, have you been bullied by another student: verbally?



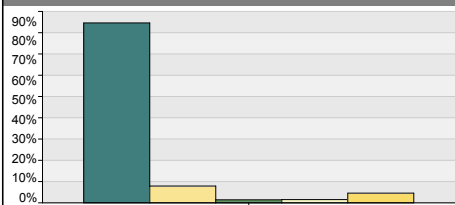
	Never	Once or twice	Every week	Many times a week	Don't know	Total
Students	1,942	678	156	178	150	3,104
Pct	62.6%	21.8%	5.0%	5.7%	4.8%	100%

#### In past 4 weeks, have you been bullied by another student: socially?



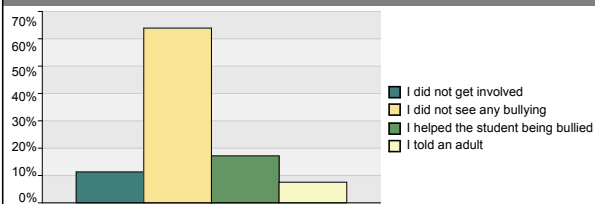
	Never	Once or twice	Every week	Many times a week	Don't know	Total
Students	2,239	483	103	114	153	3,092
Pct	72.4%	15.6%	3.3%	3.7%	4.9%	100%

#### In past 4 weeks, have you been bullied by another student: electronically?



	Never	Once or twice	Every week	Many times a week	Don't know	Total
Students	2,615	244	44	47	141	3,091
Pct	84.6%	7.9%	1.4%	1.5%	4.6%	100%

#### In the past 4 weeks, if you saw bullying at your school, what did you do?



	I did not get involved	I did not see any bullying	I helped the student being bullied	I told an adult	Total
Students	358	2,021	544	239	3,162
Pct	11.3%	63.9%	17.2%	7.6%	100%



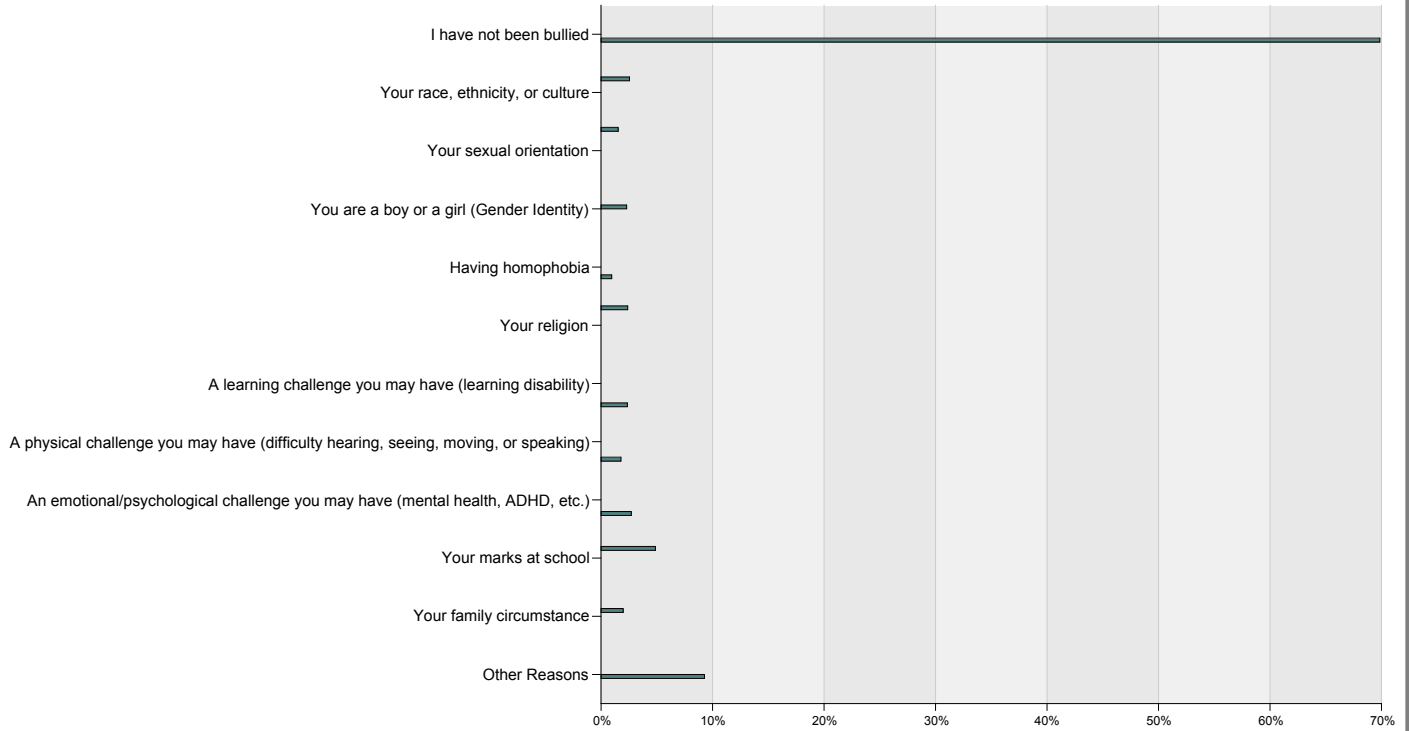
# Greater Essex County District School Board

## 2017 School Climate Survey - Grades 7-8

### Bullying

[Return to Table of Contents](#)

**In past 4 weeks at school, have other students bullied/harrassed you because of:**



	Students	Pct
I have not been bullied	2,192	69.9%
Your race, ethnicity, or culture	80	2.5%
Your sexual orientation	48	1.5%
You are a boy or a girl (Gender Identity)	72	2.3%
Having homophobia	30	1.0%
Your religion	75	2.4%
A learning challenge you may have (learning disability)	74	2.4%
A physical challenge you may have (difficulty hearing, seeing, moving, or speaking)	56	1.8%
An emotional/psychological challenge you may have (mental health, ADHD, etc.)	85	2.7%
Your marks at school	153	4.9%
Your family circumstance	62	2.0%
Other Reasons	291	9.3%