



Greater Essex County District School Board

2017 School Climate Survey - Grades 9-12

Table of Contents

Demographics.....	2
Student Information.....	3
Future Preparation.....	4
Comfort Level.....	6
Healthy Living & Well-Being.....	8
Diversity.....	10
Religious Accommodation.....	11
Safety.....	12
Bullying.....	14

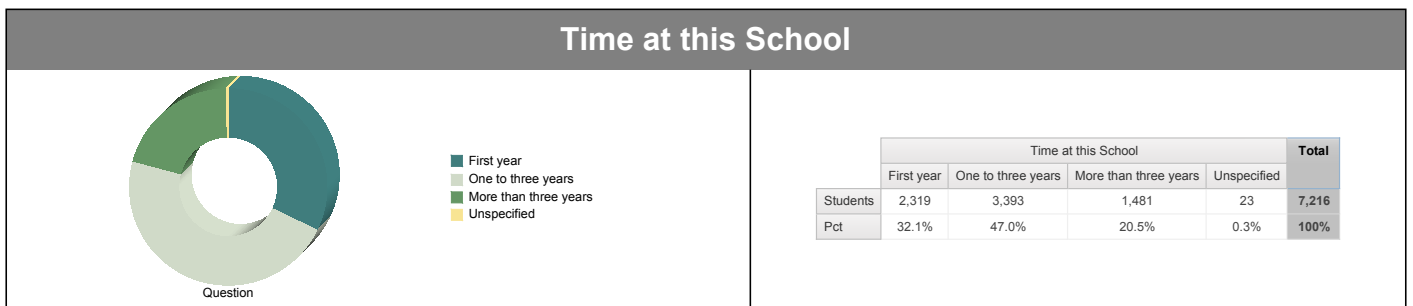
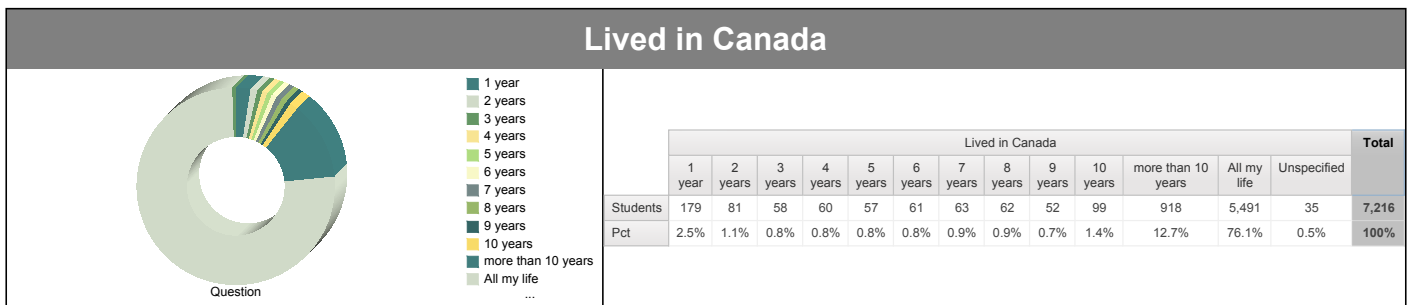
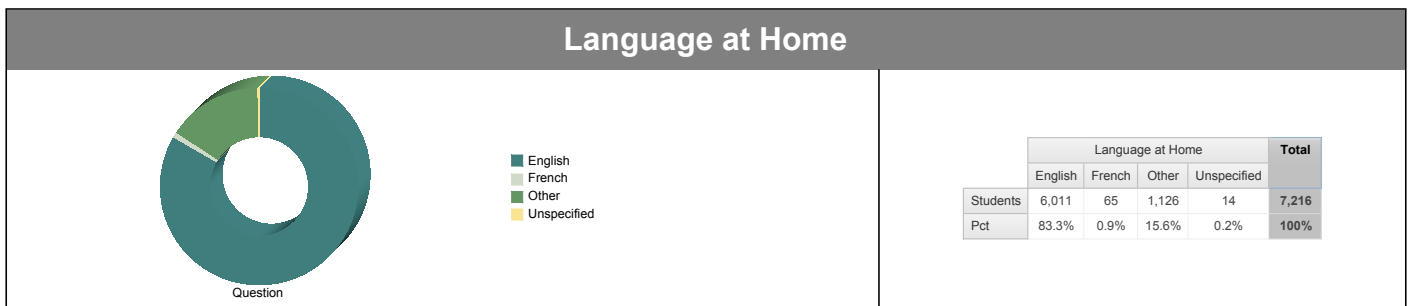
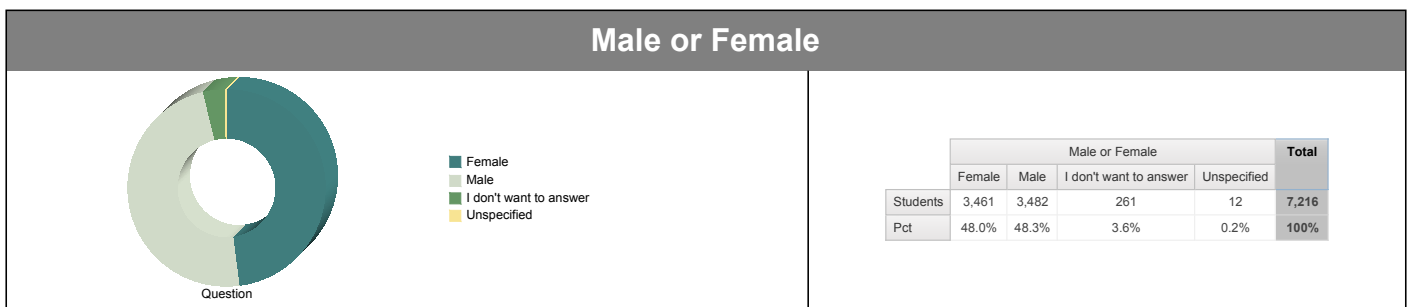
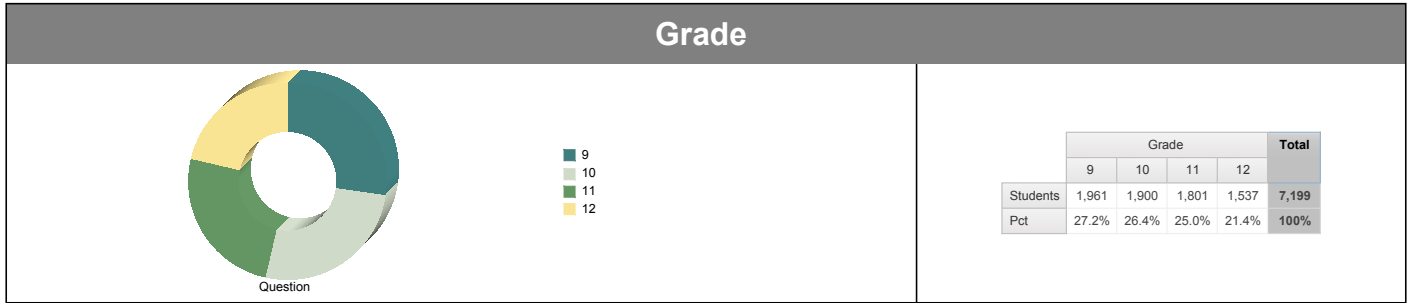


Greater Essex County District School Board

2017 School Climate Survey - Grades 9-12

Demographics

[Return to Table of Contents](#)



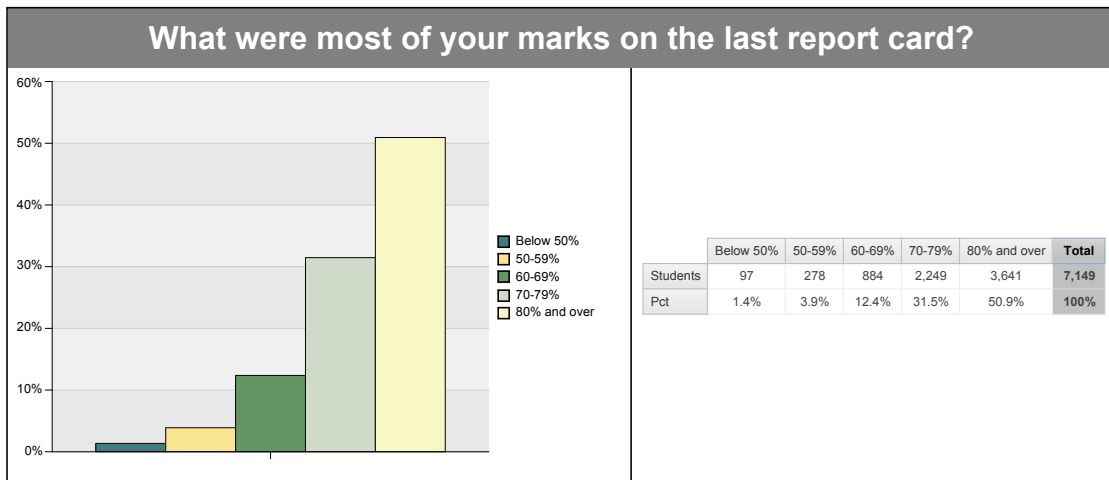
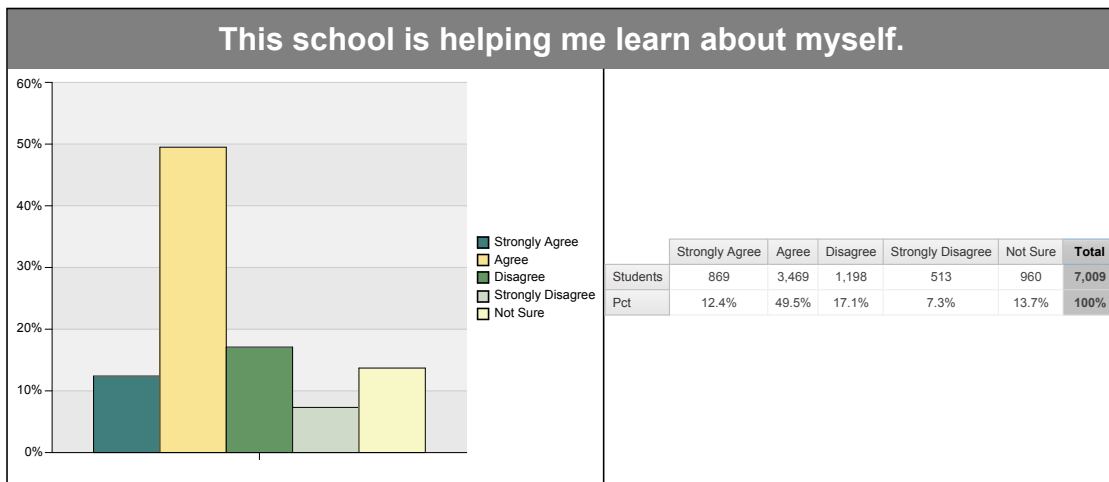
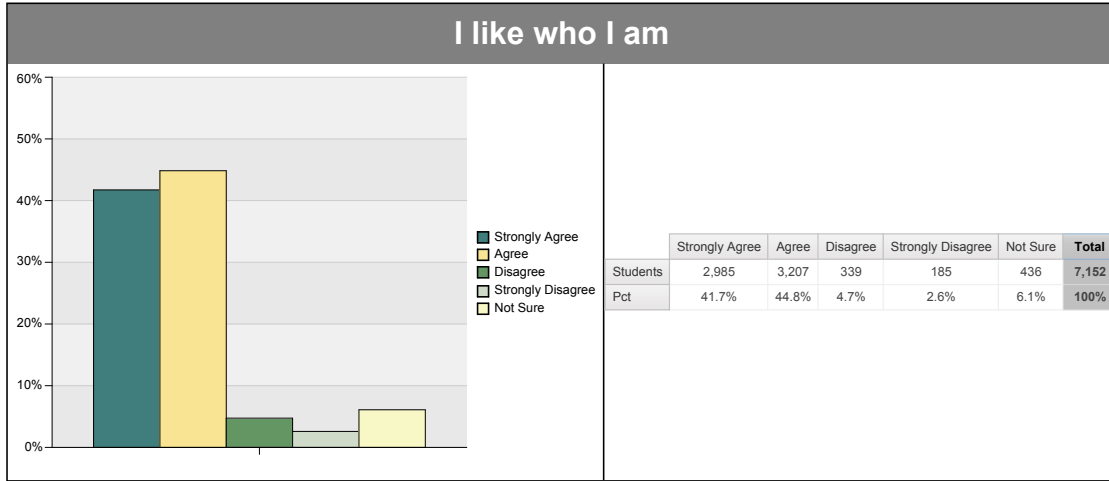


Greater Essex County District School Board

2017 School Climate Survey - Grades 9-12

Student Information

[Return to Table of Contents](#)





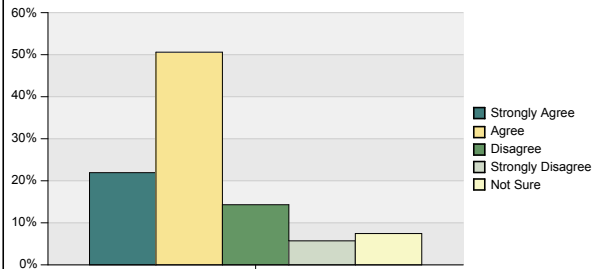
Greater Essex County District School Board

2017 School Climate Survey - Grades 9-12

Future Preparation

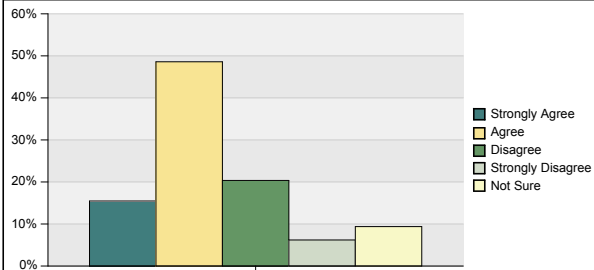
[Return to Table of Contents](#)

The school is helping me learn about what I want to do/try after high school



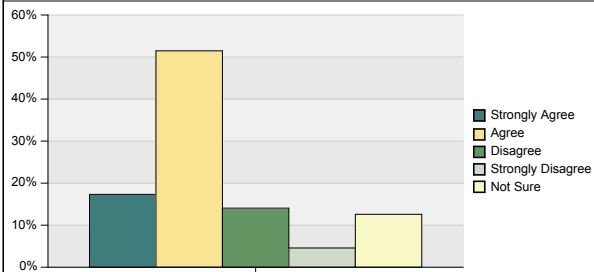
	Strongly Agree	Agree	Disagree	Strongly Disagree	Not Sure	Total
Students	1,567	3,614	1,022	408	532	7,143
Pct	21.9%	50.6%	14.3%	5.7%	7.4%	100%

The school provides enough information about the workplace.



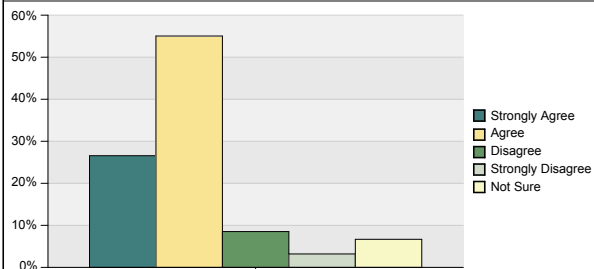
	Strongly Agree	Agree	Disagree	Strongly Disagree	Not Sure	Total
Students	1,103	3,465	1,452	442	669	7,131
Pct	15.5%	48.6%	20.4%	6.2%	9.4%	100%

The school provides information about apprenticeships.



	Strongly Agree	Agree	Disagree	Strongly Disagree	Not Sure	Total
Students	1,228	3,649	996	324	892	7,089
Pct	17.3%	51.5%	14.0%	4.6%	12.6%	100%

The school provides information about University.



	Strongly Agree	Agree	Disagree	Strongly Disagree	Not Sure	Total
Students	1,890	3,915	606	227	475	7,113
Pct	26.6%	55.0%	8.5%	3.2%	6.7%	100%



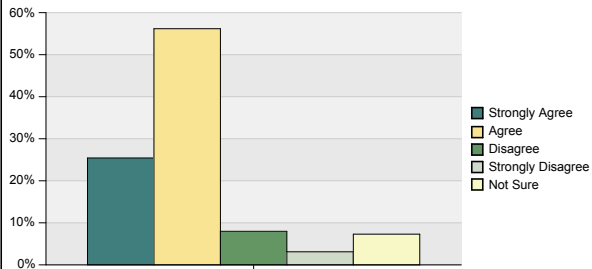
Greater Essex County District School Board

2017 School Climate Survey - Grades 9-12

Future Preparation

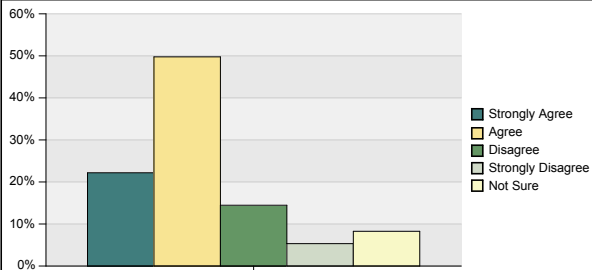
[Return to Table of Contents](#)

The school provides information about College.



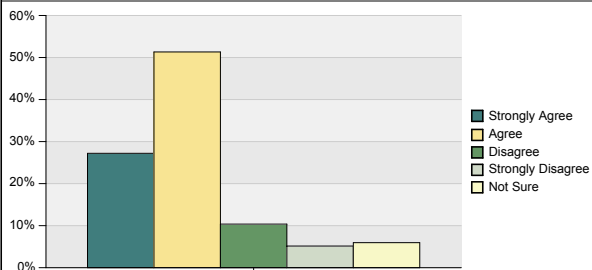
	Strongly Agree	Agree	Disagree	Strongly Disagree	Not Sure	Total
Students	1,800	3,977	565	220	517	7,079
Pct	25.4%	56.2%	8.0%	3.1%	7.3%	100%

Staff help me to understand the wide variety of careers/pathways options available to me.



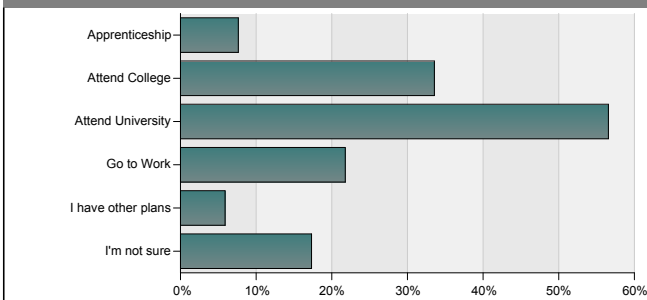
	Strongly Agree	Agree	Disagree	Strongly Disagree	Not Sure	Total
Students	1,579	3,541	1,029	379	588	7,116
Pct	22.2%	49.8%	14.5%	5.3%	8.3%	100%

This school provides a variety of courses to prepare me for what I want to do/try after high school.



	Strongly Agree	Agree	Disagree	Strongly Disagree	Not Sure	Total
Students	1,934	3,648	737	366	423	7,108
Pct	27.2%	51.3%	10.4%	5.1%	6.0%	100%

What do you plan to do immediately after high school?



	Apprenticeship	Attend College	Attend University	Go to Work	I have other plans	I'm not sure	Total
Students	550	2,416	4,072	1,568	424	1,247	10,277
Pct	7.6%	33.6%	56.6%	21.8%	5.9%	17.3%	

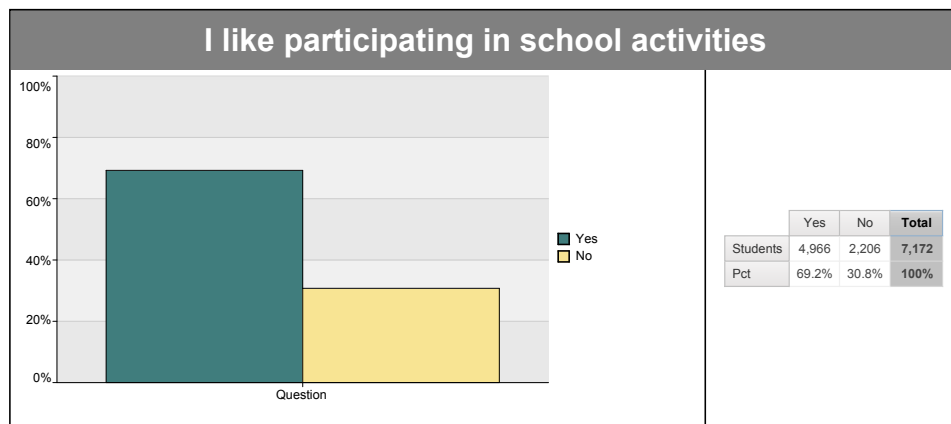
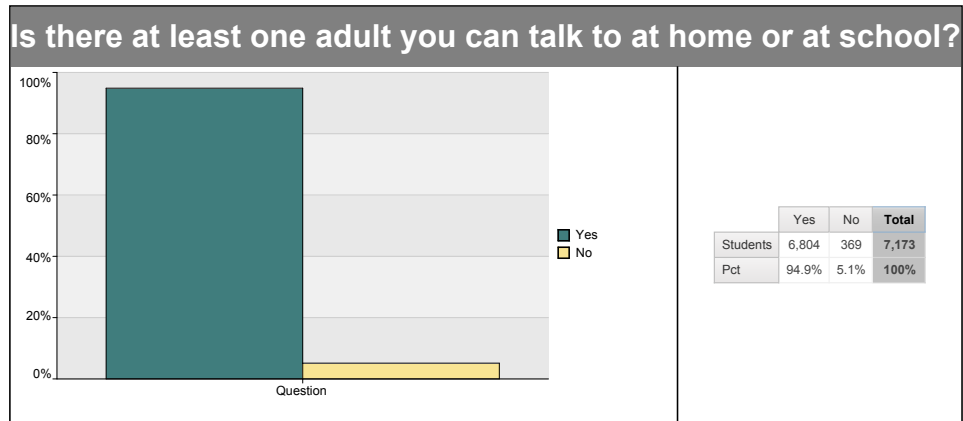
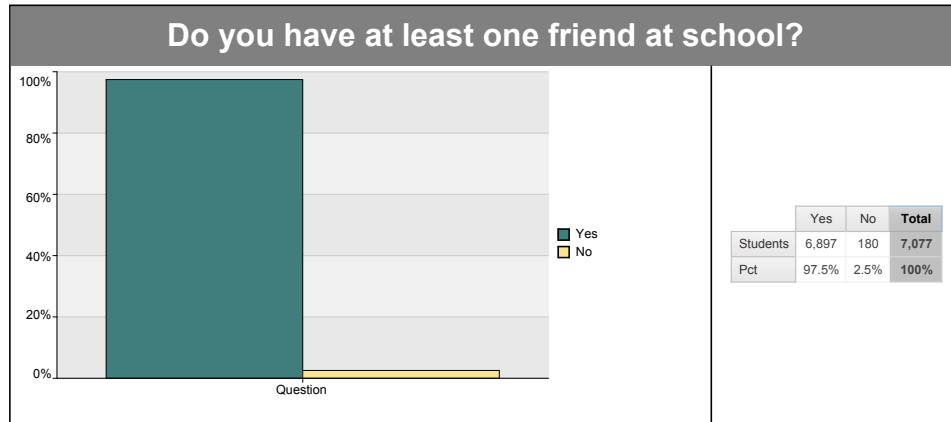


Greater Essex County District School Board

2017 School Climate Survey - Grades 9-12

Comfort Level

[Return to Table of Contents](#)



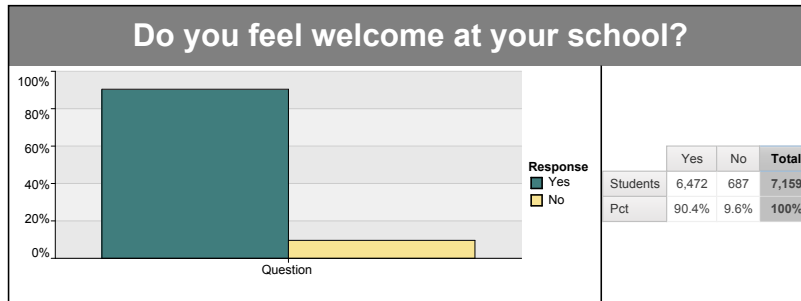


Greater Essex County District School Board

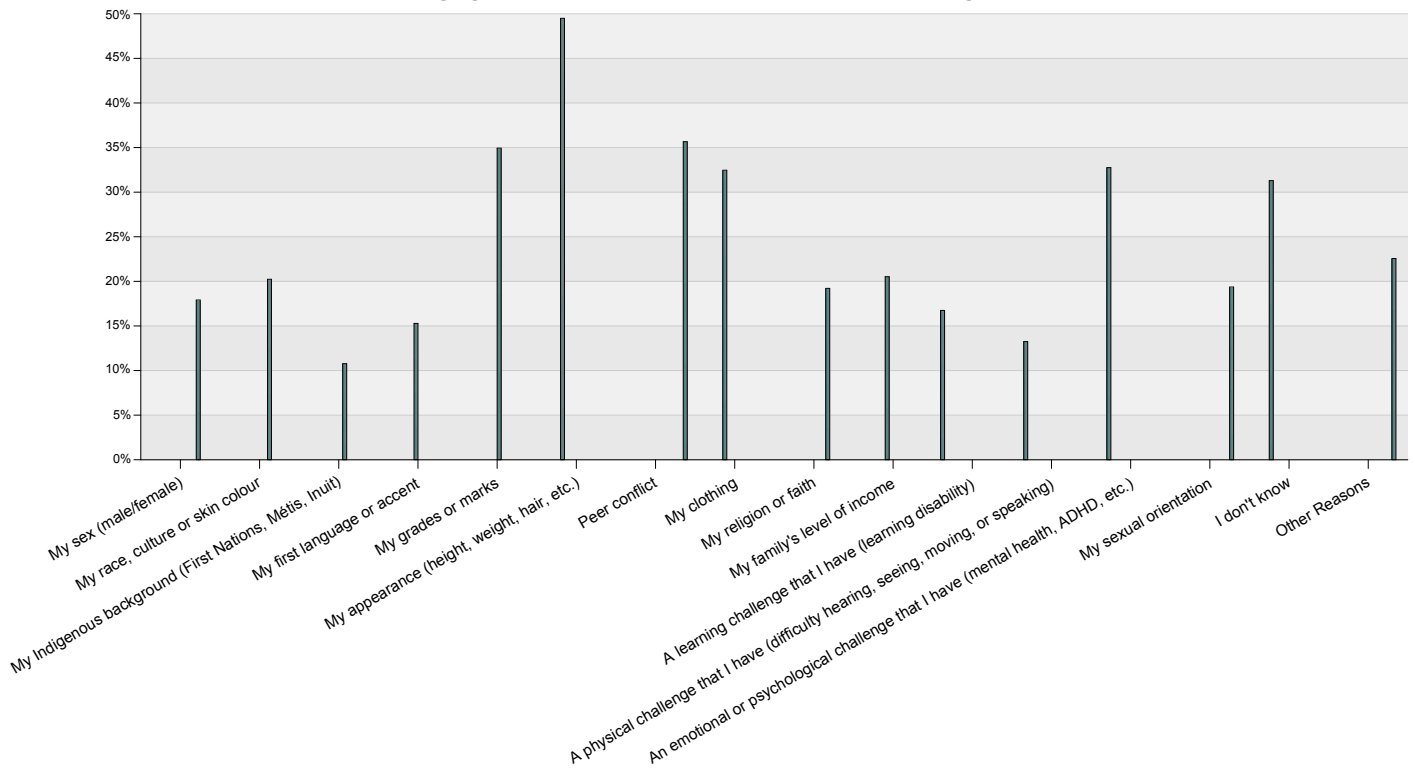
2017 School Climate Survey - Grades 9-12

Comfort Level

[Return to Table of Contents](#)



Reasons why you do not feel welcome at your school?



	Students	Pct
My sex (male/female)	123	17.9%
My race, culture or skin colour	139	20.2%
My Indigenous background (First Nations, Métis, Inuit)	74	10.8%
My first language or accent	105	15.3%
My grades or marks	240	34.9%
My appearance (height, weight, hair, etc.)	340	49.5%
Peer conflict	245	35.7%
My clothing	223	32.5%
My religion or faith	132	19.2%
My family's level of income	141	20.5%
A learning challenge that I have (learning disability)	115	16.7%
A physical challenge that I have (difficulty hearing, seeing, moving, or speaking)	91	13.2%
An emotional or psychological challenge that I have (mental health, ADHD, etc.)	225	32.8%
My sexual orientation	133	19.4%
I don't know	215	31.3%
Other Reasons	155	22.6%



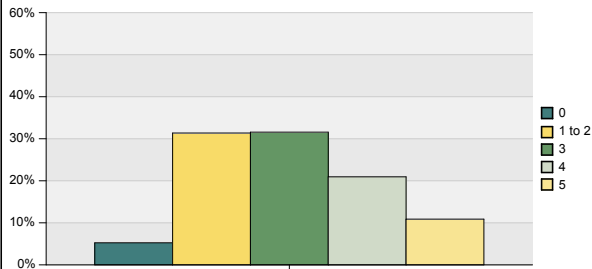
Greater Essex County District School Board

2017 School Climate Survey - Grades 9-12

Healthy Living & Well-Being

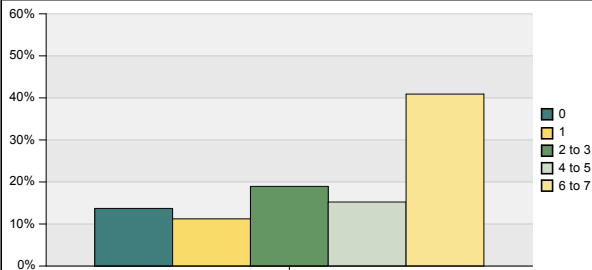
[Return to Table of Contents](#)

How many servings of fruits/vegetables do you eat on an average day?



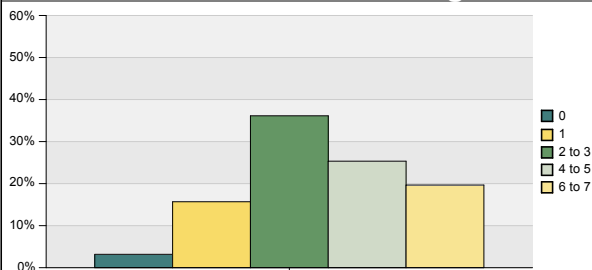
	0	1 to 2	3	4	5	Total
Students	376	2,246	2,261	1,500	779	7,162
Pct	5.2%	31.4%	31.6%	20.9%	10.9%	100%

During the past 7 days, how many days did you eat breakfast?



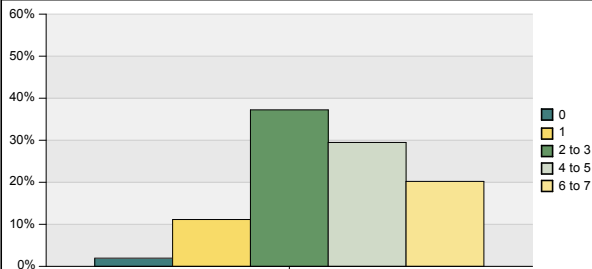
	0	1	2 to 3	4 to 5	6 to 7	Total
Students	983	805	1,359	1,092	2,934	7,173
Pct	13.7%	11.2%	18.9%	15.2%	40.9%	100%

How many hours do you spend moving (walking, running or other physical activities) including at school and home on an average day?



	0	1	2 to 3	4 to 5	6 to 7	Total
Students	225	1,111	2,559	1,794	1,392	7,081
Pct	3.2%	15.7%	36.1%	25.3%	19.7%	100%

How many hours do you spend watching TV, going on the computer, using a hand-held device or playing video games on an average school night?



	0	1	2 to 3	4 to 5	6 to 7	Total
Students	138	790	2,640	2,090	1,433	7,091
Pct	1.9%	11.1%	37.2%	29.5%	20.2%	100%



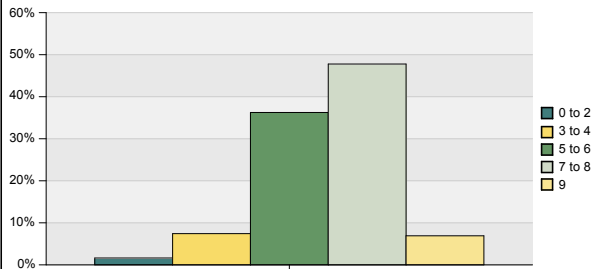
Greater Essex County District School Board

2017 School Climate Survey - Grades 9-12

Healthy Living & Well-Being

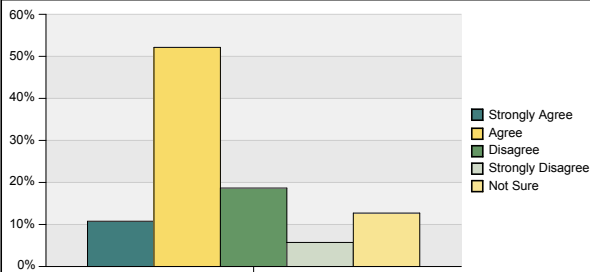
[Return to Table of Contents](#)

How many hours of sleep do I get on an average school night?



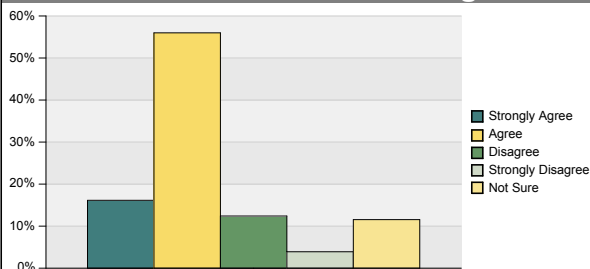
	0 to 2	3 to 4	5 to 6	7 to 8	9	Total
Students	117	533	2,601	3,428	496	7,175
Pct	1.6%	7.4%	36.3%	47.8%	6.9%	100%

There are programs, materials and equipment at school that encourage me to make healthy choices.



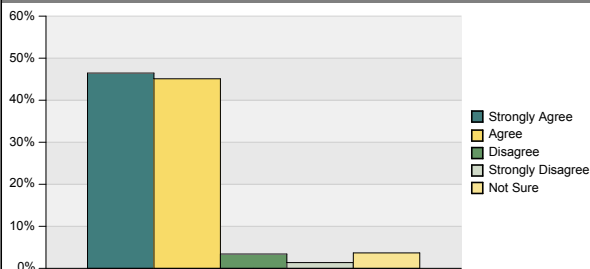
	Strongly Agree	Agree	Disagree	Strongly Disagree	Not Sure	Total
Students	771	3,732	1,336	410	910	7,159
Pct	10.8%	52.1%	18.7%	5.7%	12.7%	100%

There are adults and students at school who are healthy role models and help me to make good choices for my well-being.



	Strongly Agree	Agree	Disagree	Strongly Disagree	Not Sure	Total
Students	1,149	3,984	883	278	822	7,116
Pct	16.1%	56.0%	12.4%	3.9%	11.6%	100%

Healthy eating, physical activity and sleep are important to my "well-being".



	Strongly Agree	Agree	Disagree	Strongly Disagree	Not Sure	Total
Students	3,289	3,193	241	97	260	7,080
Pct	46.5%	45.1%	3.4%	1.4%	3.7%	100%



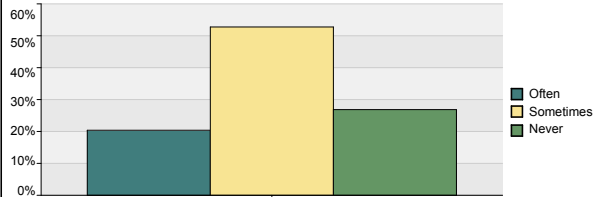
Greater Essex County District School Board

2017 School Climate Survey - Grades 9-12

Diversity

[Return to Table of Contents](#)

Since September at school, how often have you learned about the experiences/achievements of: People with disabilities?



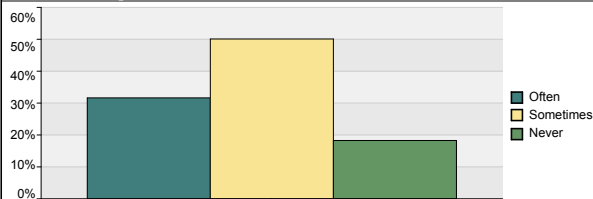
	Often	Sometimes	Never	Total
Students	1,452	3,758	1,913	7,123
Pct	20.4%	52.8%	26.9%	100%

Since September at school, how often have you learned about the experiences/achievements of: Indigenous peoples?



	Often	Sometimes	Never	Total
Students	879	3,749	2,500	7,128
Pct	12.3%	52.6%	35.1%	100%

Since September at school, how often have you learned about the experiences/achievements of: People of various races, cultures and skin colours?



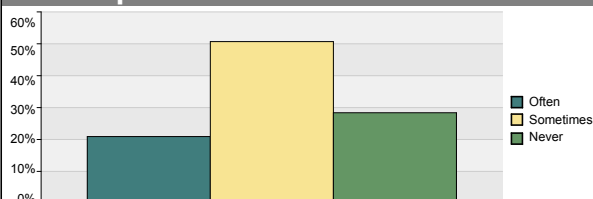
	Often	Sometimes	Never	Total
Students	2,247	3,558	1,298	7,103
Pct	31.6%	50.1%	18.3%	100%

Since September at school, how often have you learned about the experiences/achievements of: Various religious/faith communities?



	Often	Sometimes	Never	Total
Students	1,356	3,396	2,368	7,120
Pct	19.0%	47.7%	33.3%	100%

Since September at school, how often have you learned about the experiences/achievements of: People of various genders and sexual orientations?



	Often	Sometimes	Never	Total
Students	1,491	3,612	2,023	7,126
Pct	20.9%	50.7%	28.4%	100%

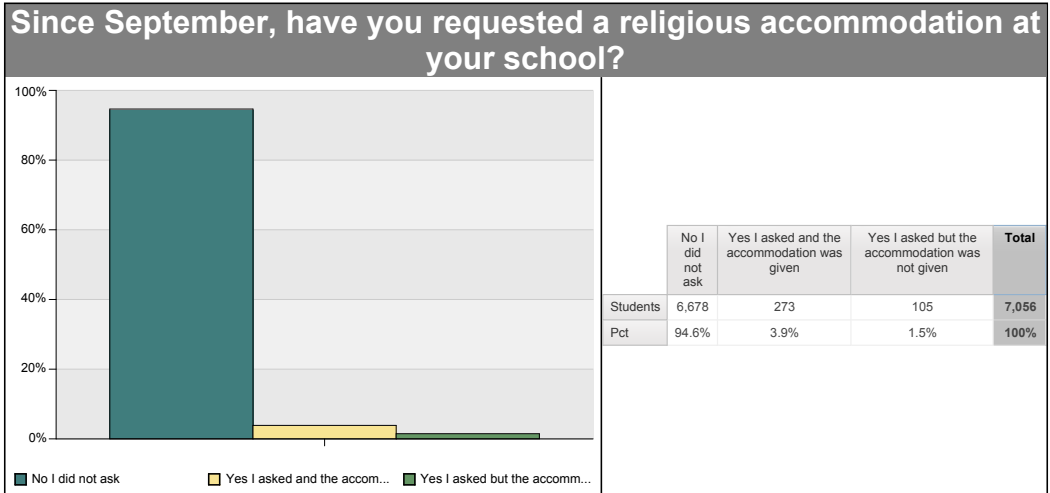


Greater Essex County District School Board

2017 School Climate Survey - Grades 9-12

Religious Accommodation

[Return to Table of Contents](#)





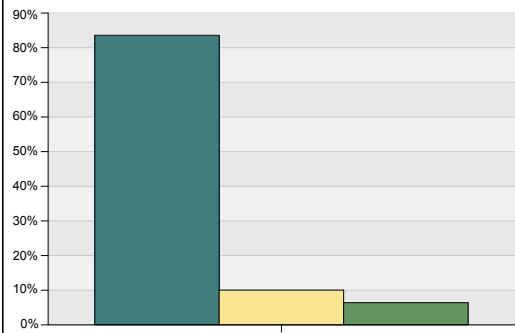
Greater Essex County District School Board

2017 School Climate Survey - Grades 9-12

Safety

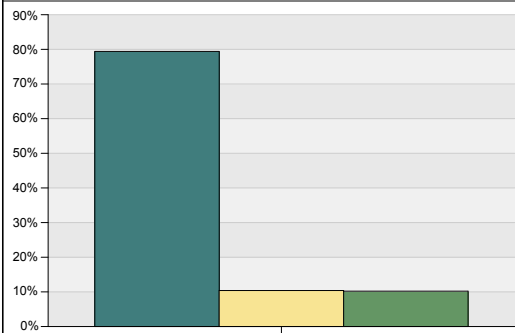
[Return to Table of Contents](#)

Since September, how safe do you feel at school in: school washrooms?



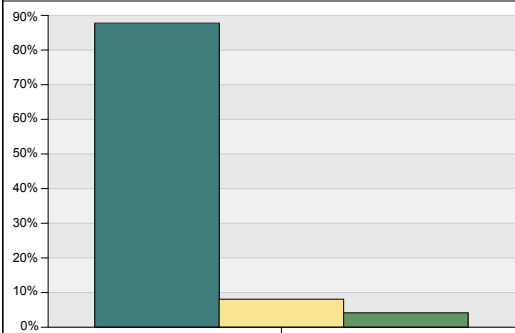
	Safe	Not Safe	N/A	Total
Students	5,982	718	458	7,158
Pct	83.6%	10.0%	6.4%	100%

Since September, how safe do you feel at school in: change rooms?



	Safe	Not Safe	N/A	Total
Students	5,679	743	730	7,152
Pct	79.4%	10.4%	10.2%	100%

Since September, how safe do you feel at school on: school grounds/property?



	Safe	Not Safe	N/A	Total
Students	6,264	577	297	7,138
Pct	87.8%	8.1%	4.2%	100%



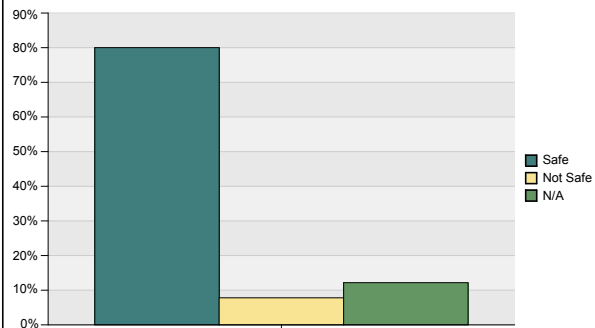
Greater Essex County District School Board

2017 School Climate Survey - Grades 9-12

Safety

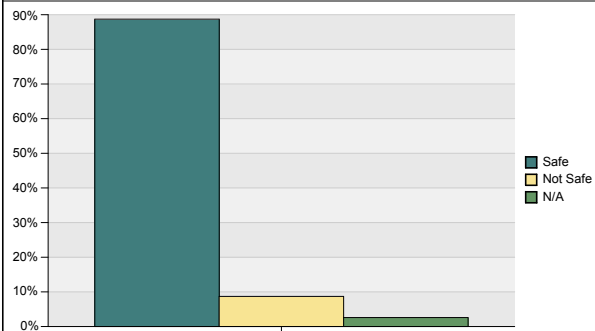
[Return to Table of Contents](#)

Since September, how safe do you feel at school in: stairways?



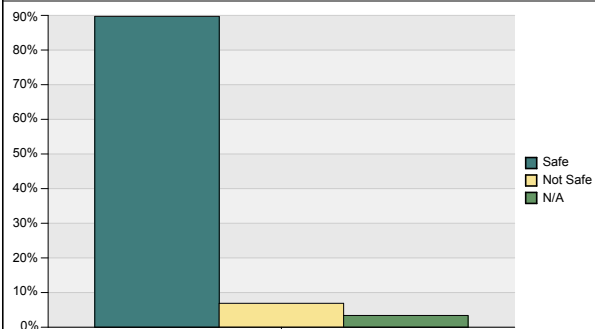
	Safe	Not Safe	N/A	Total
Students	5,711	557	869	7,137
Pct	80.0%	7.8%	12.2%	100%

Since September, how safe do you feel at school in: hallways?



	Safe	Not Safe	N/A	Total
Students	6,335	621	185	7,141
Pct	88.7%	8.7%	2.6%	100%

Since September, how safe do you feel at school in: on your way to and from school?



	Safe	Not Safe	N/A	Total
Students	6,413	493	242	7,148
Pct	89.7%	6.9%	3.4%	100%



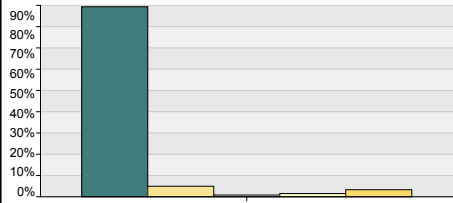
Greater Essex County District School Board

2017 School Climate Survey - Grades 9-12

Bullying

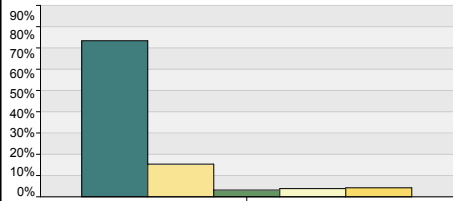
[Return to Table of Contents](#)

In past 4 weeks, have you been bullied by another student: physically?



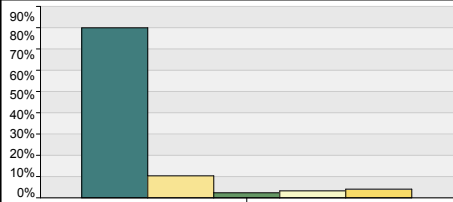
	Never	Once or twice	Every week	Many times a week	Don't know	Total
Students	6,369	353	59	109	237	7,127
Pct	89.4%	5.0%	0.8%	1.5%	3.3%	100%

In past 4 weeks, have you been bullied by another student: verbally?



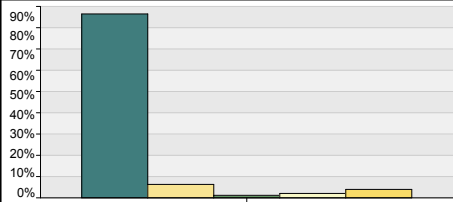
	Never	Once or twice	Every week	Many times a week	Don't know	Total
Students	5,241	1,097	226	275	302	7,141
Pct	73.4%	15.4%	3.2%	3.9%	4.2%	100%

In past 4 weeks, have you been bullied by another student: socially?



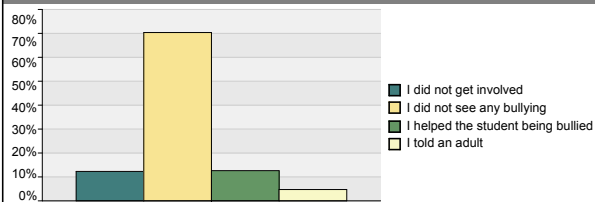
	Never	Once or twice	Every week	Many times a week	Don't know	Total
Students	5,693	736	169	233	290	7,121
Pct	79.9%	10.3%	2.4%	3.3%	4.1%	100%

In past 4 weeks, have you been bullied by another student: electronically?



	Never	Once or twice	Every week	Many times a week	Don't know	Total
Students	6,149	449	84	147	282	7,111
Pct	86.5%	6.3%	1.2%	2.1%	4.0%	100%

In the past 4 weeks, if you saw bullying at your school, what did you do?



	I did not get involved	I did not see any bullying	I helped the student being bullied	I told an adult	Total
Students	895	5,120	919	344	7,278
Pct	12.3%	70.3%	12.6%	4.7%	100%



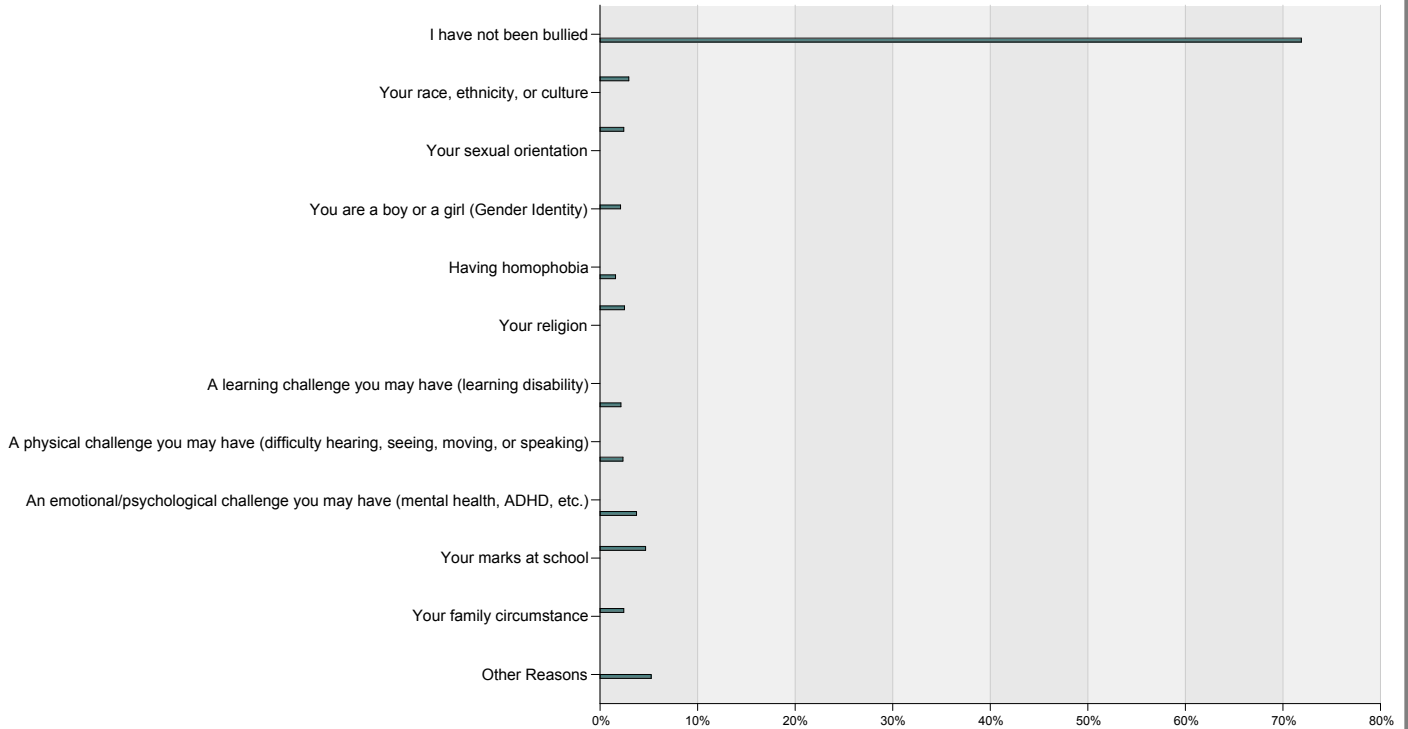
Greater Essex County District School Board

2017 School Climate Survey - Grades 9-12

Bullying

[Return to Table of Contents](#)

In past 4 weeks at school, have other students bullied/harrassed you because of:



	Students	Pct
I have not been bullied	5,175	71.9%
Your race, ethnicity, or culture	212	2.9%
Your sexual orientation	175	2.4%
You are a boy or a girl (Gender Identity)	151	2.1%
Having homophobia	114	1.6%
Your religion	180	2.5%
A learning challenge you may have (learning disability)	154	2.1%
A physical challenge you may have (difficulty hearing, seeing, moving, or speaking)	169	2.3%
An emotional/psychological challenge you may have (mental health, ADHD, etc.)	269	3.7%
Your marks at school	336	4.7%
Your family circumstance	175	2.4%
Other Reasons	377	5.2%