

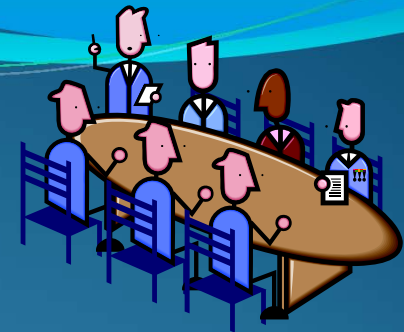
# Herman Family of Schools

## PARC

- Herman S.S.
- Coronation
- Davis
- McCallum
- Maxwell
- McGregor
- Roseville

Draft Report  
May 14<sup>th</sup>, 2012



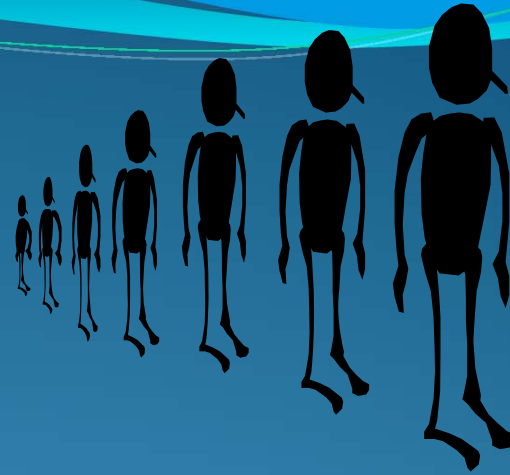


# Purpose of this Report

This is the draft report from the Program and Accommodation Review Committee (PARC) for the Herman Family of Schools. It includes the findings and recommendations of the committee to date for presentation at the third **Public Information Meeting at Davis Public School on May 14 at 7 p.m.**

This meeting is an opportunity for the committee to receive your input and to provide clarification for the community.


# BACKGROUND



The Herman Family of Schools PARC was established as a result of a motion approved by trustees at the regular Board meeting of October 18, 2011 that the Superintendent responsible for accommodations conduct a PARC study of the Herman Family of Schools to:

- a) alleviate over capacity enrolment at McCallum
- b) reduce the number of empty student spaces and improve the utilization rates within the family of schools.

This task was assigned to Superintendent Terry Lyons.



In accordance with the Policy and Regulation, “Student Program and Accommodation,” Section B, sub-section 7, the Board must appoint the Program and Accommodation Review Committee.

**Herman Secondary School**

Josh Canty – Principal  
Alexandra Duczman – Parent  
Valerie Palesh – Parent  
Dominique Labbe Samarane - Student

**McGregor School**

Lynn McLaughlin – Principal  
Minelle Toussaint-Green – Teacher  
Suzanne Cape – Parent  
Pat Roberts – Parent

**Coronation School**

Debra Cooper – Principal  
Debbie Pestowka – Parent  
Dawn Holmes – Parent

**Roseville School**

Milka Brown – Principal  
Dave Bak-Neilson – Teacher  
Teodora Takeva – Parent

**Davis School**

Rosalyn Breshgold – Principal  
Jillian Gouin – Teacher  
Jennifer Baronsky – Parent  
Ann Nasser – Parent

**Maxwell School**

Joe Younan- Principal  
Amiee Poirier – Teacher  
Karen Mangham – Parent  
Kim Lunansky – Parent

**McCallum School**

Nancy Drew - Principal  
Jenna Schertzer – Teacher  
Rick McKellar – Parent  
Derek DeMonte – Parent

**Community Members**

Heather Wilson  
Kelly Schwab (Chair)

**Appointed by the Board**

**Facilitator**

Terry Lyons

**Recording Secretary**

Lynne Hornby





# Process of Public Input

The PARC scheduled four community meetings to review and present its work, seek input and community feedback, and receive comments and questions from the public.

To accommodate the interested parties from these schools, the committee decided to hold all the community meetings in an accessible location at various schools:

February 22, 2012 – Coronation Public School

April 4th 2012 – McCallum Public School

May 14th, 2012 – Davis Public School

June 12<sup>th</sup>, 2012 – Roseville Public School



# Committee Meetings

The committee also scheduled a series of working meetings to gather information, analyze data, generate and study options and recommendations for student accommodation. Enrolment figures used are for 2013 as this is when the changes would be implemented.



# Communication

Advance notice of all public meetings was provided through school newsletters, School Council Meetings, postings on the school and Board websites and letters to the school communities.





Careful Consideration was  
given to...

Individual School Profiles

# In addition.....

Materials considered during the committee's deliberations, and minutes of the committee and community meetings, were posted on the GECDsB's website at:

<http://www.gecdsb.on.ca/community/accommodReview/>

# Community Input

Questions and comments received at public meetings and through correspondence or communication through PARC members are being discussed and considered by the PARC in the course of this study.

# Guiding Principles



In the course of discussion, the committee came to consensus on basic issues that we came to consider our guiding principles as we worked together to make the greatest impact with the least amount of disruption possible.

# Guiding Principle #1

Herman High School *must* remain open:

- Lack of availability at neighbouring secondary schools
- Many grants and programs are housed here such as French Immersion, Technology Department, Urban programming etc.



# Guiding Principle #2

It is necessary to close or consolidate schools.

# Guiding Principle #3

There are two different challenges:

- 1) Over-enrolment at the French Immersion School (McCallum)
- 2) Under enrolment in the remaining Herman feeder schools

# Guiding Principle #4

Splitting students (dividing current school populations) from closed or consolidated schools needs to be minimized.

# Recommendations

The following four recommendations have been put forward, based on the guiding principles of the committee.

# Option Number 1

## Close Maxwell and Coronation

- Adjust McCallum's western boundary to Walker Road. All current McCallum students living west of Walker Road would attend Giles French Immersion (FI).
- All Grade 7 and 8 English students go to Herman.
- Maxwell closes. JK-6 Maxwell students transition to McGregor
- Coronation closes. JK-6 Coronation students transition to Roseville.



# Rationale

- Maxwell – school has the highest FCI of all Herman Family of Schools.
- Coronation – under utilization of space due to low enrolment
- Adjust McCallum's western boundary to Walker Road – this would alleviate overcrowding at FI school. *(The utilization at McCallum with the new boundary would become 90% {no portables} with 398 students. McCallum is split in this scenario)*
- All 7 & 8's to Herman – helps bring Herman to an acceptable utilization rate and fulfills Guiding Principle #1 of keeping Herman open. *(utilization at Herman becomes 82% with 1,131 students)*
- JK-6 Maxwell students transition to McGregor – McGregor is a larger building and by moving Maxwell students here it will increase the utilization rate of McGregor. *(utilization at McGregor becomes 89% with 566 students)*
- JK-6 Coronation students transition to Roseville and Davis – Close a school that is under capacity and transition students to two school to increase their utilization rates. *(utilization at Roseville becomes 92% with 408 students)*

# Option Number 2

## Close McGregor /McCallum to Herman/ Maxwell Boundaries Change

- McCallum students transition to Herman (JK-12)
- McGregor closes. McGregor students transition to the new McCallum
- Maxwell's eastern boundary adjusted to Polonia Park. Current Maxwell students living east of Polonia Park would transition to Coronation.

# Rationale

McGregor school closes– school has the second highest FCI of all Herman Family of Schools.

McCallum students all transition to Herman to alleviate over capacity enrolment (*Herman becomes JK-12 school. Utilization becomes 97% with 1334 students*)

McGregor students transition to the “New” McCallum (*“New” McCallum utilization becomes 82% {no portables} with 362 students*)

Maxwell’s eastern boundary is adjusted to Polonia Park. (*The Maxwell students are split in this scenario*).

Current Maxwell students living East of Polonia Park would transition to Coronation. (*This would transition 79 Maxwell students to Coronation. Coronations new utilization becomes 88% with 296 students. The Maxwell utilization becomes 91% (no portables) with 280 students*).

# Option Number 3

## Close McGregor and Maxwell

- McCallum student transition to Herman (JK-12)
- McGregor closes. Students living North of Tecumseh Road transition to new McCallum. Students living south of Tecumseh Road would transition to Davis.
- Maxwell closes. Students living east of Pillette transition to Coronation. All other students transition to the new McCallum

# Rationale

McGregor and Maxwell schools close removing the two highest FCI schools from the HFOS.

McCallum students all transition to Herman (*Herman becomes JK-12 school. Utilization becomes 97% with 1334 students*)

Students living East of Pillette transition to Coronation. (*This would transition 119 Maxwell students to Coronation. Coronations new utilization becomes 100% with 336 students. The Maxwell students are split in this scenario*).

Students living North of Tecumseh Road transition to the “New” McCallum (*301 McGregor students and 240 Maxwell students will transition. The “New” McCallum utilization rate becomes 100% with 541 students and will require the existing portables*).

Students living South of Tecumseh Road transition to Davis (*This would transition 82 McGregor students to Davis. The Davis utilization rate becomes 98% with 415 students. The McGregor students are split in this scenario*).



# Option Number 4

## McGregor and Maxwell close/McCallum Boundary Change

- Maxwell Students east of Pillette move to Coronation
- Herman absorbs the remainder of the JK-8 English Students from McGregor and Maxwell
- McCallum remains French Immersion with new Western Walker Road Boundary
- McGregor and Maxwell close

# Rationale

McGregor and Maxwell schools close removing the two highest FCI schools from the HFOS.

Current Maxwell students living East of Pillette would transition to Coronation. *(This would transition 119 Maxwell students to Coronation. Coronations new utilization becomes 100% with 336 students. The Maxwell students are split in this scenario).*

The remainder of the Maxwell students and all of the McGregor students transition to Herman and becomes JK-12. *(The remaining 240 Maxwell students and all 362 McGregor students transition to Herman. JK-12 Herman utilization rate becomes 97.5% with 1340 students).*

Adjust McCallum's Western Boundary to Walker Road All Current McCallum students living west of Walker Road would attend Giles FI. *(The McCallum students are split in this scenario).*

McCallum remains the F.I. site with a new western Walker Road boundary. *(The utilization at McCallum with the new boundary would become 90% {no portables} with 398 students).*

The background is a solid blue gradient, transitioning from a lighter blue at the top to a darker blue at the bottom. There are several thin, wavy, light blue lines that sweep across the top of the image, creating a sense of motion or a stylized horizon.

Input or Questions????

# Next Community Meeting

Tuesday, June 12<sup>th</sup>, 2012

Roseville Public School

7:00 p.m.