

**Program and Accommodation
Review Committee**

Herman Family of Schools

**PARC Report
and
Recommendations to Administration**

June 20, 2012

FINAL REPORT

Final Report – Herman Family of Schools PARC

PARC final report for Herman Family of Schools:

Herman Secondary School, Coronation, Davis, McCallum, McGregor, Maxwell and Roseville

June 2012

Purpose of this report

This is the final report from the Program and Accommodation Review Committee (PARC) for the Herman Family of Schools. This report includes findings and recommendations of the committee for presentation to trustees at a Special Meeting of the Greater Essex County District School Board on June 20, 2012.

The committee presented a final draft version of this report at Community Meeting #4 on June 12, 2012. All of the input collected, including the comments and feedback received at Community Meetings, minutes of all committee and community meetings, data provided to the committee and all the input collect through the PARC e-mail box will be included to trustees with the Director's report in October.

This report includes a summary of events to-date to provide a contextual background for the reader.

Final Report – Herman Family of Schools PARC

Background

This report responds to the following motion, approved at the October 18, 2011 meeting of the Greater Essex County District School Board:

“That the Superintendent responsible for Accommodations conducts a PARC study of The Herman Family of Schools to:

- *Alleviate over capacity enrolment at McCallum*
- *Relieve the number of empty student spaces and improve the utilization rates within the family of schools.”*

Final Report – Herman Family of Schools PARC

In accordance with the Policy and Regulation, “Student Program and Accommodation,” Section B, sub-section 7, the Board must appoint the Program and Accommodation Review Committee.

Herman Secondary School

*Josh Canty – Principal
Alexandra Duczman – Parent
Valerie Palesh – Parent
Dominique Labbe Samarane - Student*

McGregor School

*Lynn McLaughlin – Principal
Minelle Toussaint-Green – Teacher
Suzanne Cape – Parent
Pat Roberts – Parent*

Coronation School

*Debra Cooper – Principal
Debbie Pestowka – Parent
Dawn Holmes – Parent*

Roseville School

*Milka Brown – Principal
Dave Bak-Neilson – Teacher
Teodora Takeva – Parent*

Davis School

*Rosalyn Breshgold – Principal
Jillian Gouin – Teacher
Jennifer Baronsky – Parent
Ann Nasser – Parent*

Maxwell School

*Joe Younan- Principal
Amiee Poirier – Teacher
Karen Mangham – Parent
Kim Lunansky – Parent*

McCallum School

*Nancy Drew - Principal
Jenna Schertzer – Teacher
Rick McKellar – Parent
Derek DeMonte – Parent*

Community Members

*Heather Wilson
Kelly Schwab (Chair)*

Appointed by the Board

Facilitator

Terry Lyons

Recording Secretary

Lynne Hornby

Final Report – Herman Family of Schools PARC

Process of Public Input

The PARC scheduled four community meetings to review and present its work, seek input and community feedback, and receive comments and questions from the public.

To accommodate the interested parties from all schools, the committee decided to hold the community meetings at various accessible schools.

1. February 22, 2012 – Coronation Public School
2. April 4th 2012 – McCallum Public School
3. May 14th, 2012 – Davis Public School
4. June 12th, 2012 – Roseville Public School

Advanced notice of all public meetings was provided through school newsletters, posting on the school and Board websites and letters to the school communities.

The committee also scheduled a series of working meetings to gather information, analyze data, generate and study options and recommendations for student accommodation:

1. January 23, 2012
2. February 13, 2012
3. February 22, 2012
4. March 6, 2012
5. March 21, 2012
6. April 4, 2012
7. April 16, 2012
8. May 8, 2012
9. May 31, 2012

All information including the relevant School Information Profiles, materials considered during the committee's deliberations and minutes of the committee and community meetings are posted on the GECDSB's website at:

<http://www.gecdsb.on.ca/community/accommodReview/>

Questions and comments received at public meetings and through correspondence or communication through PARC members were discussed and considered by the PARC in the course of this study.

Final Report – Herman Family of Schools PARC

Recommendations and analysis

In the course of its work, the Herman Family of Schools (HFOS) Program and Accommodation Review Committee reviewed all the schools in respect to their enrolment challenges.

Guiding Principles were agreed upon by the entire committee to be used when considering the feasibility of our options. These guiding principles are outlined below as a point of reference to how the committee decided which option would best meet this, as well as the Trustee's mandate.

Guiding Principles

- Herman High School *must* remain open:
 - Lack of availability at neighbouring secondary schools
 - Many grants and programs are housed here, such as French Immersion, Technology Department, and Urban programming.
- It is necessary to close or consolidate schools.
- There are two different challenges:
 - Over-enrolment at the French Immersion School (McCallum)
 - Under-enrolment in the remaining Herman feeder schools
- Splitting students (dividing current school populations) from closed or consolidated schools needs to be minimized.

The committee went through many possible scenarios for this Family of Schools; prior to the third Community meeting, these were reduced to four based on the Trustee's mandate and our Guiding Principles. With the community input information these four options were reviewed again, then each was voted on by the committee whether they should be presented to the community and Trustees. It was decided by vote of the committee to recommend the following:

Final Report – Herman Family of Schools PARC

Close McGregor /McCallum to Herman/Maxwell Boundaries Change

Recommendation:	Rationale:
<ul style="list-style-type: none">• McGregor closes. McGregor students transition to the McCallum building• McCallum students transition to Herman (JK-12)• Maxwell’s eastern boundary adjusted to Pillette. Current Maxwell students living east of Pillette (but not on Pillette) would transition to Coronation	<ul style="list-style-type: none">• Close the school with the highest dollar amount for repairs (\$7,608,072)• Alleviates overcrowding issue at McCallum and empty seats at Herman• Fill spots at Coronation

Other Rationale:

- Supports the Guiding Principle of keeping Herman open by filling empty seats
- Supports the Guiding Principle to affect the least number of students possible by preventing most students from being separated from their classmates. Only 95 students from Maxwell are divided from their classmates; the rest of the student population being transitioned into different buildings will move together
- Brings the Family of Schools utilization rate up to 89.5%

Final Report – Herman Family of Schools PARC

Current Enrolment:

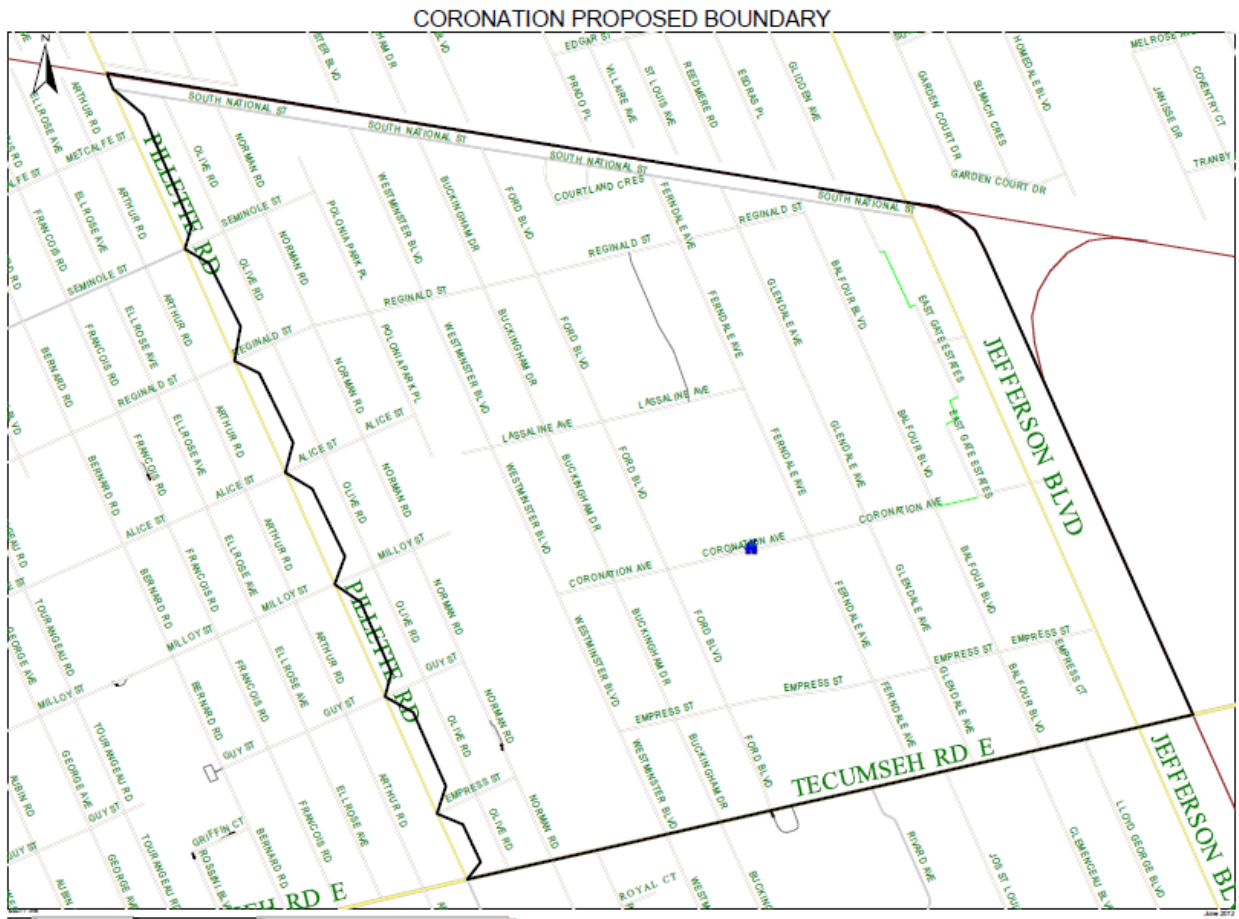
Year	Coronation	Maxwell	McCallum	Roseville	Davis	McGregor	Herman	Total
Capacity	334	305	440	372	420	636	1374	3 881
Sept. 2011	217	304	438	254	371	381	810	2 775
Empty Seats	117	1	2	118	49	255	564	1 106
% Capacity	65%	99%	99%	68%	88%	60%	59%	72%

Enrolment with implementation of recommendation:

Year	Coronation	Maxwell	Roseville	Davis	McGregor (McCallum Building)	Herman McCallum		Total
Capacity	334	305	372	420	440	1374		3 245
Sept. 2015	306	235	278	359	388	698	643	2 907
Empty Seats	28	95	94	61	52	33	0	363
% Capacity	93%	77%	75%	88%	88%	98%		89.5%

Final Report – Herman Family of Schools PARC

Change of Boundary for Coronation



Final Report – Herman Family of Schools PARC

Change of Boundary for Maxwell



Final Report – Herman Family of Schools PARC

Closing Remarks:

The Herman Family of Schools PARC considered several recommendations and they can be found on the PARC's committee and community minutes link below.

The Herman Family of Schools PARC believes this recommendation presented to the Director of Education and the GECDSB fits the mandate issued by the Trustees as well as the committee's Guiding Principles.

GECDSB web link for PARC minutes and presentations:

<http://gecdsb.on.ca/community/accommodReview/>