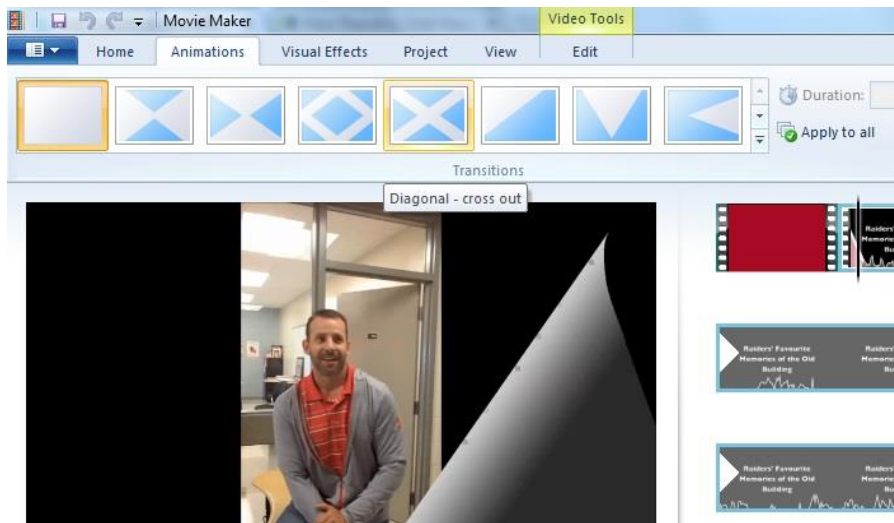


# Adding Transitions

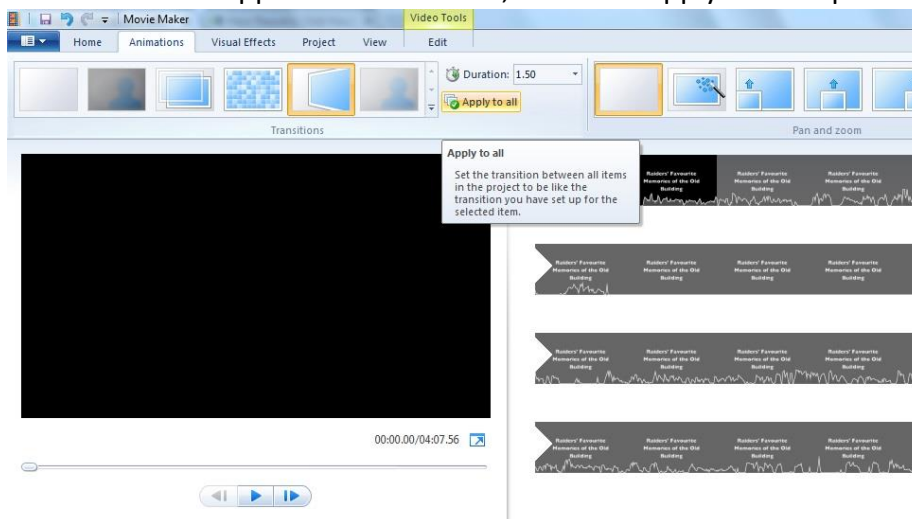
The purpose of this tutorial is to teach you how to add your own special touches to make your movies look distinctive and professional. By adding transitions and effects, you can make sure that your movie flows nicely from one scene to the next.

## Adding Transitions:

1. In your story board where you have your movie production, select the video you want the transition to appear before. In the top tab selection, left-click on the “Animations” tab.

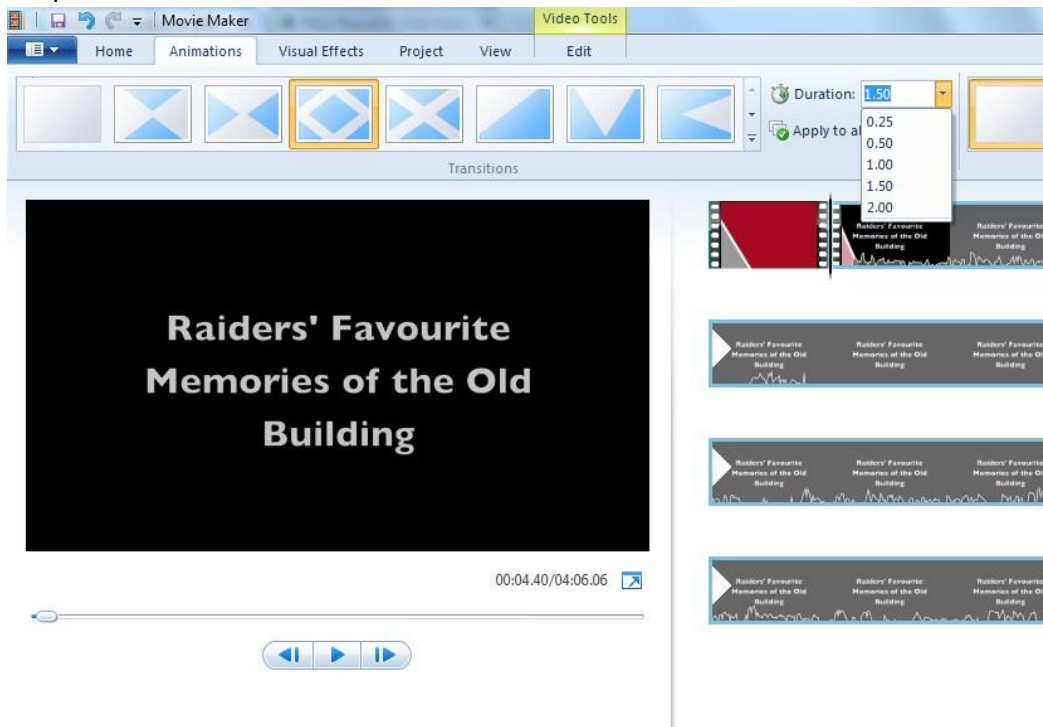


2. From here you can view a large assortment of different animations and you can choose whichever ones you want. All of these were created by Microsoft and they are in a default setting. If you select an animation, it will play a preview for you. If you want the same animation applied to each video, click the “Apply to All” option.



## How to change the Transition Duration:

1. Once you have selected your animation, in the “Animation Tab” left-click the “Duration” drop down arrow.



2. In this drop down menu, you can select a default duration. The duration lengths are set in seconds. To insert your own customized time, press BACKSPACE on your keyboard and type in your desired time in seconds.