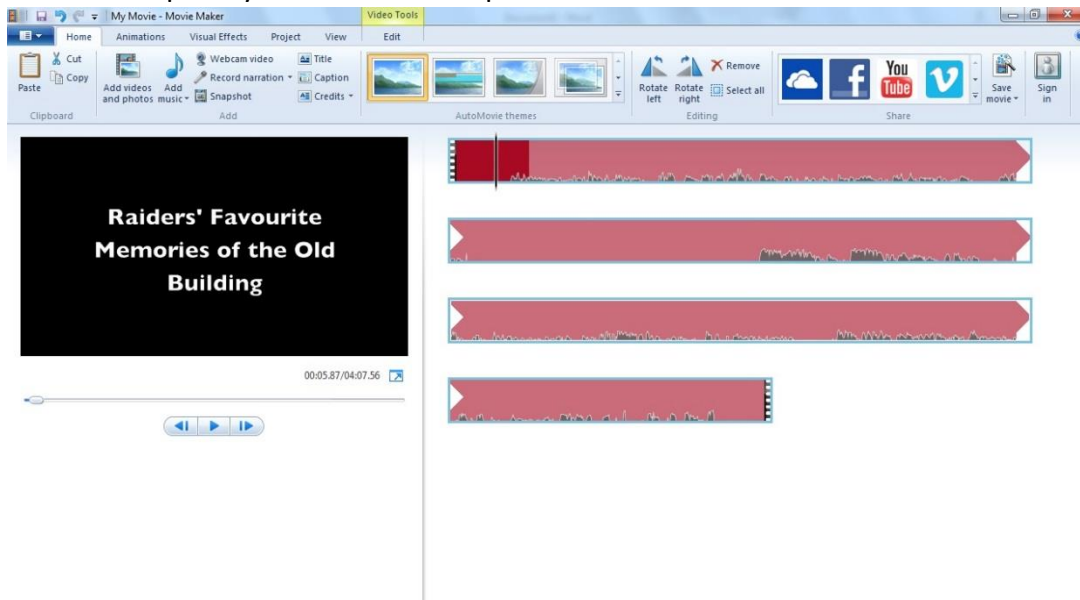


# How to Split and Trim Clips

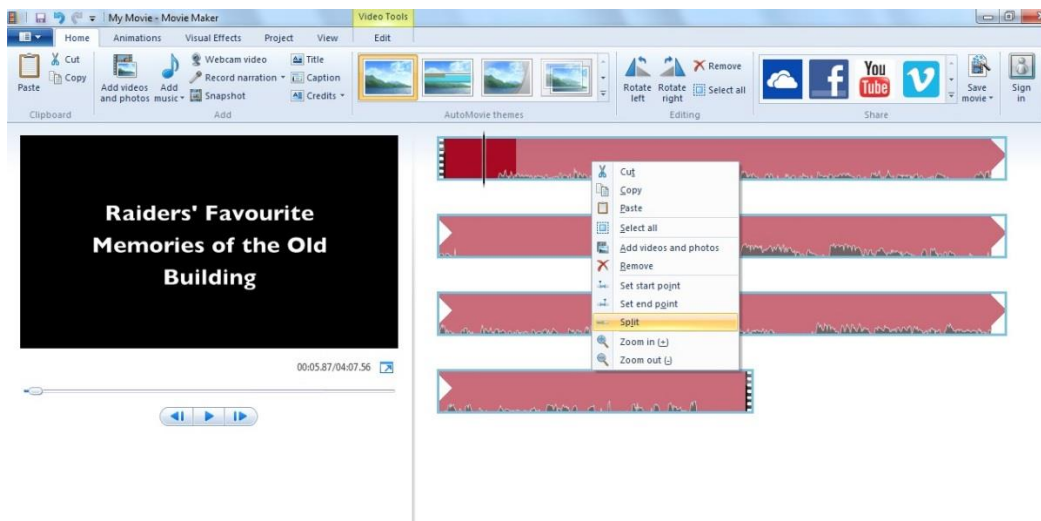
The purpose of this tutorial is to make your clips easier to work with and manipulate. Using Windows Movie Maker, you can edit clips in a variety of different ways. You can split a long clip into two shorter clips, trim the beginning or ending of a clip, and even create new clips.

## Splitting a Clip:

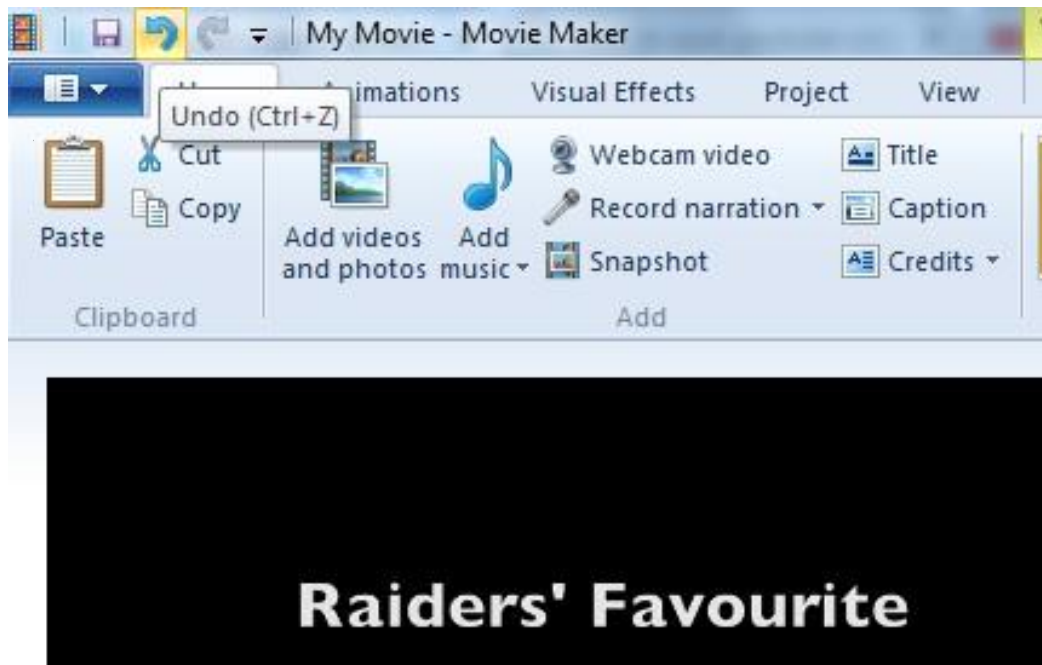
1. In the storyboard/timeline section, select the video you wish to split. Select the PLAY button (or press SPACEBAR on your keyboard) to play the video. Pause the clip when it reaches the point you would like to split it at.



2. To split the clip, Right-Click anywhere on the clip and select "Split" from the drop-down menu.

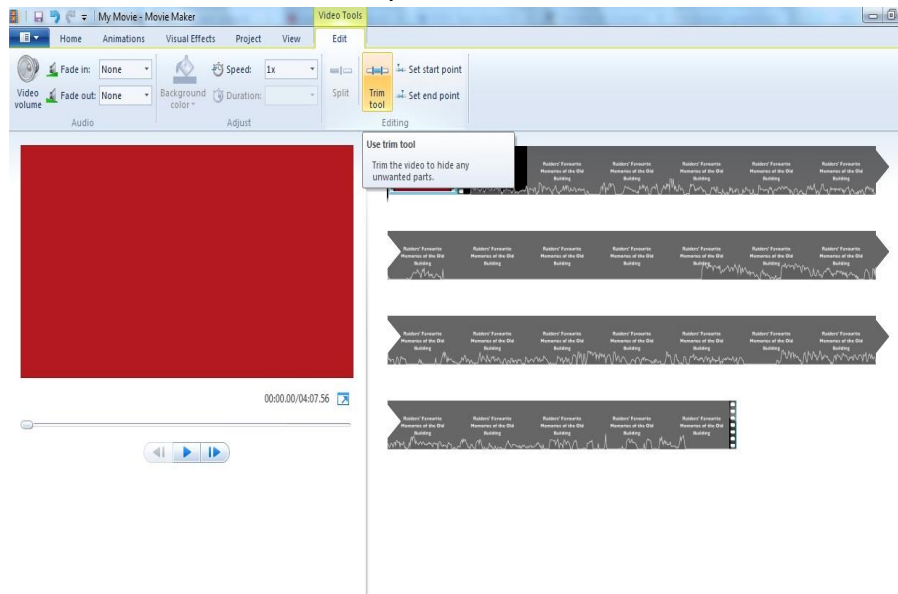


3. Your clip should now appear like this. If you want to undo your split, select the blue backwards arrow.

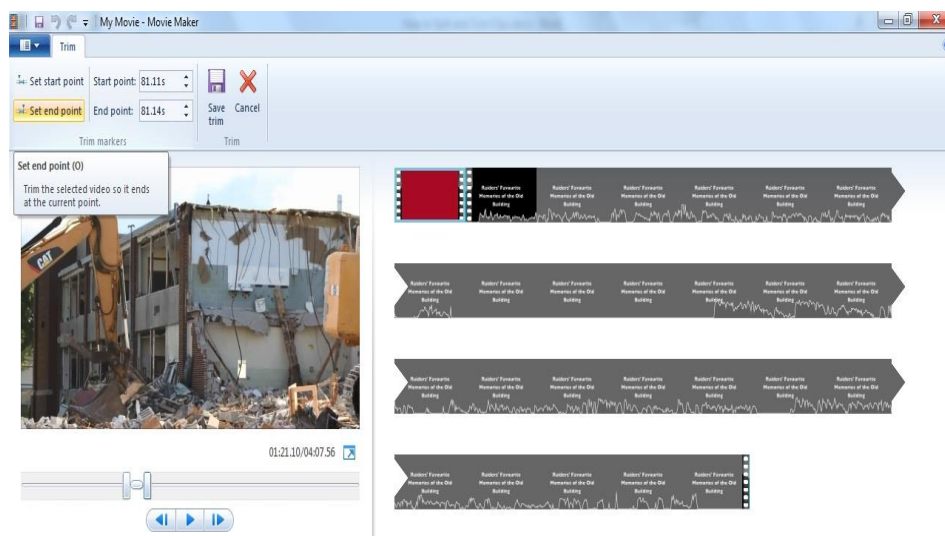


## Trimming Clips:

1. Select the clip you want to trim. Double click on it and the top tool bar will shift over to the Edit menu. From here you can select the “Trim Tool” in the menu.



2. While in the trimming process, you have the ability to fine-tune where you want your clip to start or end. You can use the bar under your video to slide to the exact time you want the video to start. Once you have chosen, select “Set Start Point”. From here, you can repeat the same steps to determine your end point. Once you have chosen your desired time, select “Set End Point”.



3. Once you have your desired start and end points, you can select the “Save Trim” option and your video will be saved with your settings.

